

DiaDent's Network

DiaDent Group International(Korea & International)

16, Osongsaengmyeong 4-ro, Osong-eup, Heungdeok-gu Cheongju-si Chungcheong buk-do,
28161, South Korea
Tel)82-43-266-2315 Fax)82-43-262-8658
E-mail: diadent@diadent.co.kr

DiaDent Group International Inc. (Canada & USA)

11-3871 North Fraser Way, Burnaby B.C, Canada V5J 5G6
Tel)1-604-451-8851 Fax)1-604-451-8865
E-mail: diadent@diadent.com

DiaDent Europe B.V (Europe)

Antennestraat 70, 1322 AS Almere, the Netherlands
Tel)31-36-549-8607 Fax)31-36-536-7317
E-mail: diadent@diadent europe.com

2020 / 2021
DiaDent Group International



Welcome to DiaDent

Passion for Innovation

DiaDent is one of the leading Endodontic supply companies in the dental industry since 1985. For more than 35 years, DiaDent has been dedicated to making a better and high-quality dental products through our passion for the Innovation and leads the global market in high-advanced Endodontic items manufacturing and supplying.

From its inception as exporting Gutta Percha Points and Paper Points, DiaDent has grown to become a global leader, specializing in Endodontic devices and materials. DiaDent's innovative and reliable items, services and processes are recognized as the world's brand, today DiaDent has been exporting them to over 900 dealers in 129 countries all around the globe. DiaDent is taking the world in different systems with the highest standards so that DiaDent can more effectively contribute to create new markets and continue to make a responsible approach to the global business. All of DiaDent's products are inspected by a strict Quality Management System following the ISO 13485 standard .

Always striving to be better and innovative, DiaDent puts in our utmost efforts to strengthen R&D part to develop brand-new dental devices and items. Our products from DiaDent's R&D part lead us to the global market in high-tech dental manufacturing. Through innovative, reliable products and services and a responsible approach to the business and collaboration with our partners and customers, DiaDent will continue to see every challenge as an opportunity and we will do the best to be perfectly positioned as one of the world's recognized leaders in the dental industry.

Everyone here at DiaDent would like to thank you, our valued customers and business partners, for your continued support and loyalty. We wish everyone another happy and prosperous year ahead.

Sincerely,

DiaDent Group International

DiaDent's Network

DiaDent Group International (Korea & International)

16, Osongsaengmyeong 4-ro, Osong-eup, Heungdeok-gu Cheongju-si
Chungcheong buk-do, 28161, South Korea
Tel) 82-43-266-2315 Fax)82-43-262-8658
E-mail: diadent@diadent.co.kr

DiaDent Group International Inc. (Canada & USA)

11-3871 North Fraser Way, Burnaby B.C, Canada V5J 5G6
Tel) 1-604-451-8851 Fax)1-604-451-8865
E-mail: diadent@diadent.com

DiaDent Europe B.V (Europe)

Antennestraat 70, 1322 AS Almere, the Netherlands
Tel) 31-36-549-8607 Fax)31-36-536-7317
E-mail: diadent@diadenturope.com



DiaDent's innovative and reliable items, services and processes are recognized as the world's brand, today DiaDent has been exporting them to over 900 dealers in 129 countries all around the globe.

- | | |
|----------------------|-------------------|
| ALBANIA | LUXEMBOURG |
| ALGERIA | MACEDONIA |
| ARMENIA | MADAGASCAR |
| ARGENTINA | MALAYSIA |
| AUSTRALIA | MALDIVES |
| AZERBAIJAN | MALI |
| AUSTRIA | MALTA |
| BAHRAIN | MAURITIUS |
| BANGLADESH | MEXICO |
| BELARUS | MOLDOVA |
| BELGIUM | MONGOLIA |
| BOSNIA & HERZEGOVINA | MONTENEGRO |
| BRAZIL | MOROCCO |
| BRUNEI | MYANMAR |
| BULGARIA | NETHERLANDS |
| CANADA | NEW ZEALAND |
| CAMBODIA | NEPAL |
| COSTA RICA | NICARAGUA |
| CURACAO | NIGERIA |
| CHILE | NORWAY |
| CHINA | OMAN |
| COLOMBIA | PAKISTAN |
| CROATIA | PALESTINE |
| CYPRUS | PANAMA |
| CZECH REPUBLIC | PAPUA NEW GUINEA |
| DENMARK | PARAGUAY |
| DOMINICAN REPUBLIC | PERU |
| ECUADOR | PHILIPPINES |
| EGYPT | POLAND |
| EL SALVADOR | POLYNESIA |
| ESTONIA | PORTUGAL |
| ETHIOPIA | QATAR |
| FINLAND | REUNION ISLAND |
| FRANCE | ROMANIA |
| GEORGIA | RUSSIA |
| GERMANY | RWANDA |
| GHANA | SAUDI ARABIA |
| GREECE | SENEGAL |
| GUATEMALA | SERBIA |
| HONG KONG | SINGAPORE |
| HONDURAS | SLOVAKIA |
| HUNGARY | SLOVENIA |
| INDIA | SOUTH AFRICA |
| INDONESIA | SPAIN |
| IRAN | SRI LANKA |
| IRAQ | SUDAN |
| IRELAND | SWEDEN |
| ISRAEL | SWITZERLAND |
| ITALY | SYRIA |
| JAMAICA | TAIWAN |
| JAPAN | THAILAND |
| JORDAN | TRINIDAD & TOBAGO |
| KAZAKHSTAN | TUNISIA |
| KENYA | TURKEY |
| KOREA | U.A.E |
| KOSOVO | UGANDA |
| KUWAIT | U.K |
| KYRGYZSTAN | UKRAINE |
| LAOS | U.S.A |
| LATVIA | URUGUAY |
| LEBANON | UZBEKISTAN |
| LIBYA | VENEZUELA |
| LIECHTENSTEIN | VIETNAM |
| LITHUANIA | YEMEN |

INDEX

ROOT CANAL OBTURATION

07 ~ 25

COSMETIC & RESTORATIVES

26 ~ 35

ENDODONTIC INSTRUMENTS

36 ~ 49

MISCELLANEOUS ITEMS

50 ~ 51

- Millimeter Marked Gutta Percha Points
- Special Taper Gutta Percha Points
- Millimeter Marked Paper Points
- Special Taper Paper Points
- Temporary Filling Materials
- Diapex Plus (Premixed Calcium Hydroxide Paste with Iodoform)
- Diapaste (Premixed Calcium Hydroxide Paste with Barium Sulfate)
- Root Canal Sealing Material
- Dia-Root BIO MTA (Mineral Trioxide Aggregate)
- Dia-Root BIO Sealer (Bioceramic Root Canal Sealing Material)
- Evofill Duo (Cordless Warm Vertical Compaction & Backfill Obturation Device with built-in GP Cartridge)
- Duo-Pen (Cordless Warm Vertical Compaction Device)
- Duo-Gun (Cordless Backfill Obturation Device)

- Restorative Nano Hybrid Composite Resin
- Flowable Restorative Composite Resin
- Light Cure Bonding Agent
- Etching Gel
- Temporary Dental Cement
- Cordless LED Curing Light

- Nickel Titanium Rotary Files
- EDTA Root Canal Preparation Cream
- EDTA 17% Solution
- Endodontic Micro-Motor
- Flexible K-File
- Lentulo
- Probe File
- Gate Drills
- Peeso Reamers
- Nickel Titanium Hand Files
- Stainless Steel Hand Files
- Stainless Steel Spreader
- Stainless Steel Plugger
- Endo Condenser
- Endo Gauges
- Irrigation Syringes
- Endodontic Irrigation Tips

- Aluminum Endo Storage Boxes
- Prophy Brushes
- Prophy Cups

ROOT CANAL OBTURATION

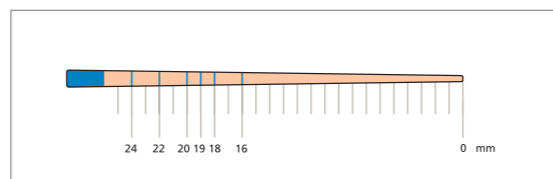
- Millimeter Marked Gutta Percha Points
- Special Taper Gutta Percha Points
- Millimeter Marked Paper Points
- Special Taper Paper Points
- Temporary Filling Materials
- Diapex Plus (Premixed Calcium Hydroxide Paste with Iodoform)
- Diapaste (Premixed Calcium Hydroxide Paste with Barium Sulfate)
- Root Canal Sealing Material
- Dia-Root BIO MTA (Mineral Trioxide Aggregate)
- Dia-Root BIO Sealer (Bioceramic Root Canal Sealing Material)
- Evofill Duo (Cordless Warm Vertical Compaction & Backfill Obturation Device with built-in GP Cartridge)
- Duo-Pen (Cordless Warm Vertical Compaction Device)
- Duo-Gun (Cordless Backfill Obturation Device)

DiaDent's Millimeter Marked Gutta Percha Points & Paper Points

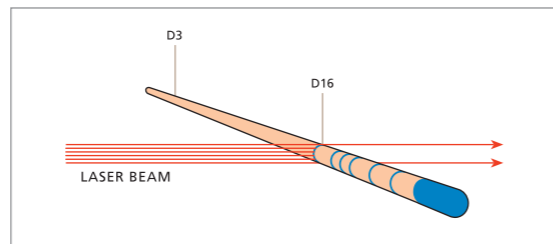
- All DiaDent Points are Hand Jig Rolled to exacting standards.
- They are uniformly tapered and unsurpassed for consistency in sizing.
- All Points are laser inspected to ensure the tightest tolerances surpassing ISO standards.

Millimeter Marked Gutta Percha Points

- Quick and easy method for depth measurements.
- Points with mm marking at 16mm, 18mm, 19mm, 20mm, 22mm and 24mm.
- Eliminates apex perforations which may lead to bleeding.
- Reaches the apex, completely seal the entire length of the canal.
- Save chair time with premeasured points.
- Most accurate depth measurements.



Millimeter Marked

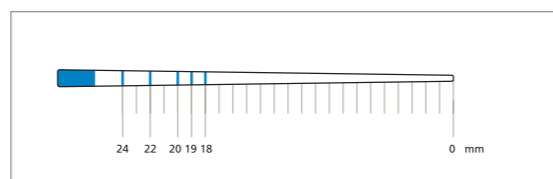


Computerized Laser Inspection System

- Each point is inspected by the laser beam.
- Using a laser beam, each DiaDent ML.029 point is individually inspected for diameters at D3 and D16.
- ISO and ADA standard requires the use of 1/100mm incremental measurement units, DiaDent uses 1/1,000mm increments.

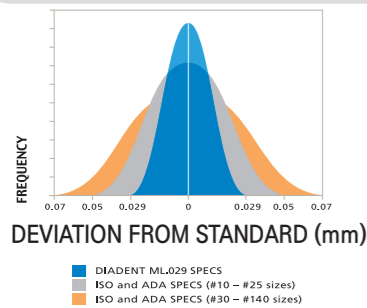
Millimeter Marked Paper Points

- Quick and easy method for depth measurements.
- Points with mm marking at 18mm, 19mm, 20mm, 22mm and 24mm.
- Eliminates apex perforations which may lead to bleeding.
- Completely drying the entire length of the canal.
- Save chair time with premeasured points.
- Most accurate depth measurements.

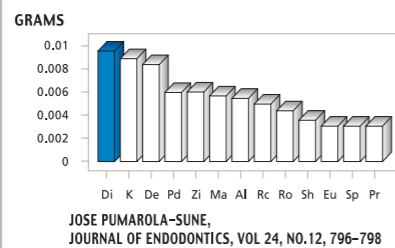


Millimeter Marked

DiaDent Quality Assurance



Comparative absorption of Paper Points, by Brand



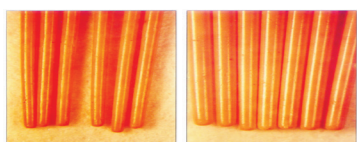
DIADENT PATENTS

- US Patent No. 6,004,133
- International Patents pending.
- European Patents No. 0964656
- United Kingdom Patents No. 0964656
- Deutsches Patents No. EP 0964656

Hand Jig Rolled Points vs Machine Rolled Points

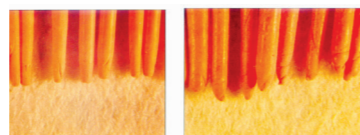
- DiaDent's method of hand rolling the points ensures the following:

DiaDent Hand Jig Rolled Gutta Percha Points



- Consistent, Uniform taper
- Smooth, Rounded Bullet shaped tips
- Readily conforms to shape of canal
- Greater likelihood of optimal apical seal

Machine Rolled Gutta Percha Points



- Inconsistent taper
- Uneven, Unpredictably shaped tips
- Overlapping of material of the tips
- Reduced likelihood of optimal apical seal

ML.029

MILLIMETER MARKED + LASER INSPECTED GUTTA PERCHA POINTS



ML.029

- M - Millimeter Marked
- L - Laser Inspected
- .029 - Diameter Tolerance

Available Sizes

Size	SP-60
XF	ML102-S601
FF	ML102-S602
MF	ML102-S603
F	ML102-S604
FM	ML102-S605
M	ML102-S606
ML	ML102-S607
L	ML102-S608
XL	ML102-S609
XF/M	ML102-S691

(Pkg. of 100)

Package Information

- SP-60 Slide Package
- one hand slide open lid
- Box dimension:
70 × 13 × 45mm(W × H × D)

Size vs Color Chart

15	45	90	XF	ML
20	50	100	FF	L
25	55	110	MF	XL
30	60	120	F	08
35	70	130	FM	10
40	80	140	M	

(Pkg. of 120)

Size	SP-60
#8	ML101-S601
#10	ML101-S602
#15	ML101-S603
#20	ML101-S604
#25	ML101-S605
#30	ML101-S606
#35	ML101-S607
#40	ML101-S608
#45	ML101-S609
#50	ML101-S610
#55	ML101-S611
#60	ML101-S612
#70	ML101-S613
#80	ML101-S614
#15/40	ML101-S691
#45/80	ML101-S692
#90/140	ML101-S693

COLOR CODED GUTTA PERCHA POINTS



Available Sizes

Size	P-60
XF	102-601
FF	102-602
MF	102-603
F	102-604
FM	102-605
M	102-606
ML	102-607
L	102-608
XL	102-609
XF/M	102-691

(Pkg. of 100)

Package Information

- P-60 Spill Proof Package
- 6 compartments plastic package
- Box dimension:
71 × 13 × 46mm(W × H × D)

Size vs Color Chart

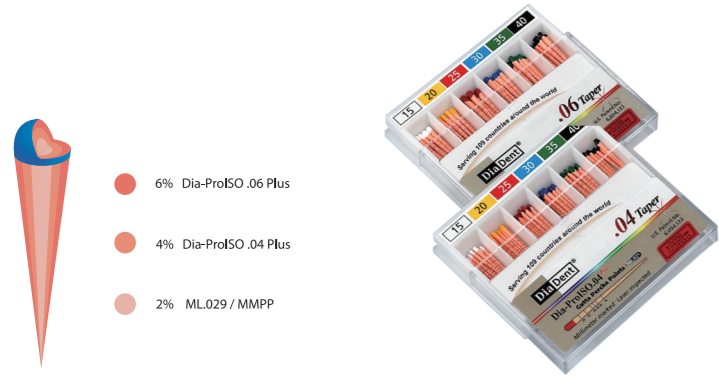
15	45	90	XF	ML
20	50	100	FF	L
25	55	110	MF	XL
30	60	120	F	08
35	70	130	FM	10
40	80	140	M	

(Pkg. of 120)

Size	P-60
#8	101-601
#10	101-602
#15	101-603
#20	101-604
#25	101-605
#30	101-606
#35	101-607
#40	101-608
#45	101-609
#50	101-610
#55	101-611
#60	101-612
#70	101-613
#80	101-614
#15/40	101-691
#45/80	101-692
#90/140	101-693

DIA-PROISO.04/.06 PLUS MILLIMETER MARKED + LASER INSPECTED SPECIAL TAPER GUTTA PERCHA POINTS

- Millimeter Marked Special Taper Gutta Percha Points.
- Designed to be used to complement for Profile®, Hero® & K3® files.
- Available in taper .04 & .06



Available Sizes

Size	Dia-ProISO .04 Plus	Dia-ProISO .06 Plus
	SP-60	SP-60
#15	ML158-S603	ML159-S603
#20	ML158-S604	ML159-S604
#25	ML158-S605	ML159-S605
#30	ML158-S606	ML159-S606
#35	ML158-S607	ML159-S607
#40	ML158-S608	ML159-S608
#45	ML158-S609	ML159-S609
#50	ML158-S610	ML159-S610
#55	ML158-S611	ML159-S611
#60	ML158-S612	ML159-S612
#70	ML158-S613	ML159-S613
#80	ML158-S614	ML159-S614
#15/40	ML158-S691	ML159-S691
#45/80	ML158-S692	ML159-S692

(Pkg. of 60)

DIA-PROT PLUS



- Designed to be used to complement DIA-PT™ File, Dia-X File and Protaper® Files.
- Millimeter Marked Points
- One hand slide open lid

Size	ITEM No.
#F1	MLP150-S601
#F2	MLP150-S602
#F3	MLP150-S603
#F4	MLP150-S604
#F5	MLP150-S605
#F1/F5	MLP150-S691
#F4/F5	MLP150-S692
#F1/F5	MLP150-S693

(Pkg. of 60)

DIA-PROT NEXT



- Designed to be used to complement Protaper® Next Files.
- Millimeter Marked Points
- One hand slide open lid

Size	ITEM No.
#X2	ML167-S602
#X3	ML167-S603
#X4	ML167-S604
#X5	ML167-S605
#X2/X5	ML167-S691
#X2/X3	ML167-S692

(Pkg. of 60)

DIA-PRO R



- Designed to be used to complement Reciproc® Files.
- Millimeter Marked Points

Size	ITEM No.
#25	ML164-605
#40	ML164-608
#50	ML164-610
#Asst(25/40/50)	ML164-691

(Pkg. of 60)

DIA-PRO W GOLD



- Designed to be used to complement Wave One® Gold Files.
- Millimeter Marked Points
- One hand slide open lid

Size	ITEM No.
#Small	ML168-S601
#Primary	ML168-S602
#Medium	ML168-S603
#Large	ML168-S604
#Asst(Small/Primary/Medium/Large)	ML168-S691

(Pkg. of 60)

DIA-PRO W



- Designed to be used to complement Wave One® Files.
- Millimeter Marked Points
- One hand slide open lid

Size	ITEM No.
#Small	ML165-601
#Primary	ML165-602
#Large	ML165-603
#Asst(Small/Primary/Large)	ML165-691

(Pkg. of 60)

FEATHERED TIP



- Designed to be used as auxiliary points to the master cone technique
- Extra fine taper
- Hand Jig Rolled

Size	ITEM No.
#XF	126-601
#FF	126-602
#MF	126-603
#F	126-604
#FM	126-605
#M	126-606
#ML	126-607
#L	126-608
#XF/M	126-691

(Pkg. of 100)

MMPP

MILLIMETER MARKED PAPER POINTS



- MMPP is marked to provide preliminary guidance in measuring the root canal depth before proceeding clinically with the application of the Gutta Percha Points.
- These points are highly absorbent and color coded to identify ISO tip sizes.

Available Sizes

Size	SP-60	Size	SP-60
XXF	MP202-S601	#8	MP201-S601
XF	MP202-S602	#10	MP201-S602
F	MP202-S603	#15	MP201-S603
M	MP202-S604	#20	MP201-S604
C	MP202-S605	#25	MP201-S605
XC	MP202-S606	#30	MP201-S606
XXF/XC	MP202-S691	#35	MP201-S607
		#40	MP201-S608
		#45	MP201-S609
		#50	MP201-S610
		#55	MP201-S611
		#60	MP201-S612
		#70	MP201-S613
		#80	MP201-S614
		#15/40	MP201-S691
		#45/80	MP201-S692
		#90/140	MP201-S693

(Pkg. of 200)

Package Information

- **P-33 Cell Package**
Points remain sterile until opened
Box dimension: 78×19×50mm(W×H×D)
- **SP-60 Slide Package**
One hand slide open lid
Box dimension: 70×13×45mm(W×H×D)

Size vs Color Chart

8	10		
15	45	90	XXF
20	50	100	XF
25	55	110	F
30	60	120	M
35	70	130	C
40	80	140	XC

Contents

Size	P-33	SP-60
#08-80	200pcs	200pcs
#90-140	200pcs	120pcs

COLOR CODED PAPER POINTS

- Made from specially formulated highly absorbent papers.
- Color Coded.
- Hand Jig rolled to ensure Superior absorbency.

Available Sizes

Size	P-60	Size	P-60
XXF	202-601	#8	201-601
XF	202-602	#10	201-602
F	202-603	#15	201-603
M	202-604	#20	201-604
C	202-605	#25	201-605
XC	202-606	#30	201-606
XXF/XC	202-691	#35	201-607
		#40	201-608
		#45	201-609
		#50	201-610
		#55	201-611
		#60	201-612
		#70	201-613
		#80	201-614
		#15/40	201-691
		#45/80	201-692
		#90/140	201-693

(Pkg. of 200)

Size vs Color Chart

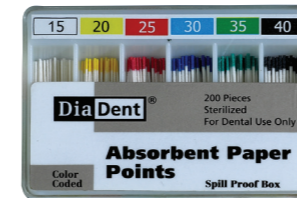
8	10		
15	45	90	XXF
20	50	100	XF
25	55	110	F
30	60	120	M
35	70	130	C
40	80	140	XC

Contents

Size	P-60
#08-80	200pcs
#90-140	120pcs

Package Information

- **P-60 Spill Proof Package**
6 compartments plastic package
Box dimension: 71×13×50mm(W×H×D)



DIA-PROISO .04/.06 PLUS MILLIMETER MARKED SPECIAL TAPER PAPER POINTS

- Millimeter marked Special Taper Absorbency Paper Points.
- Designed to be used for drying and cleaning the canals prepared with **Profile**, **Hero** & **K3** files.
- Available in .04 & .06 taper.

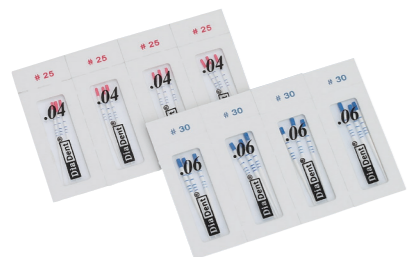


Available Sizes

Size	Dia-ProISO .04 Plus	Dia-ProISO .06 Plus
	SP-60	SP-60
#15	MP258-S603	MP259-S603
#20	MP258-S604	MP259-S604
#25	MP258-S605	MP259-S605
#30	MP258-S606	MP259-S606
#35	MP258-S607	MP259-S607
#40	MP258-S608	MP259-S608
#45	MP258-S609	MP259-S609
#50	MP258-S610	MP259-S610
#55	MP258-S611	MP259-S611
#60	MP258-S612	MP259-S612
#70	MP258-S613	MP259-S613
#80	MP258-S614	MP259-S614
#15/40	MP258-S691	MP259-S691
#45/80	MP258-S692	MP259-S692

(Pkg. of 100)

DIA-PROISO .04/.06 PLUS IN THE CELL PACKAGE



- Points remain sterile until opened

Cell pkg	Dia-ProISO .04 Plus	Dia-ProISO .06 Plus
#15	MP 258-703	MP 259-703
#20	MP 258-704	MP 259-704
#25	MP 258-705	MP 259-705
#30	MP 258-706	MP 259-706
#35	MP 258-707	MP 259-707
#40	MP 258-708	MP 259-708
#15/40	MP 258-791	MP 259-791

(Pkg. of 120)

DIA-PROT

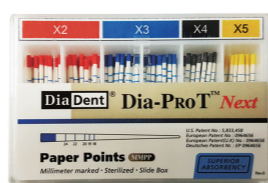


- Designed to be used to complement **DIA-PT** File, **Dia-X** File and **Protaper** Files.
- Millimeter Marked Points
- One hand slide open lid

Size	ITEM No.
#F1	MP250-S601
#F2	MP250-S602
#F3	MP250-S603
#F4	MP250-S604
#F5	MP250-S605
#F1/F3	MP 250-S691
#F4/F5	MP 250-S692
#F1/F5	MP 250-S693

(Pkg. of 100)

DIA-PROT NEXT

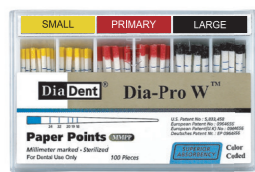


- Designed to be used to complement **Protaper** Next Files.
- Millimeter Marked Points
- One hand slide open lid

Size	ITEM No.
#X2	MP267-S602
#X3	MP267-S603
#X4	MP267-S604
#X5	MP267-S605
#X2/X5	MP267-S691
#X2/X3	MP267-S692

(Pkg. of 100)

DIA-PRO W

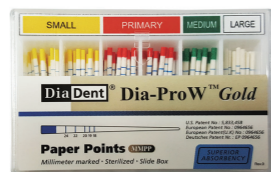


- Designed to be used to complement **Wave One** Files.
- Millimeter Marked Points
- One hand slide open lid

Size	ITEM No.
#Small	MP265-601
#Primary	MP265-602
#Large	MP265-603
#Asst(Small/Primary/Large)	MP265-691

(Pkg. of 100)

DIA-PRO W GOLD



- Designed to be used to complement **Wave One** Gold Files.
- Millimeter Marked Points
- One hand slide open lid

Size	ITEM No.
#Small	MP268-S601
#Primary	MP268-S602
#Medium	MP268-S603
#Large	MP268-S604
#Asst(Small/Primary/Medium/Large)	MP268-S691

(Pkg. of 100)

DIA-PRO R



- Designed to be used to complement **RECIPROC** Files.
- Millimeter Marked Points

Size	ITEM No.
#25	MP264-605
#40	MP264-608
#50	MP264-610
#Asst(25/40/50)	MP264-691

(Pkg. of 100)

E-TEMP

HYDRAULIC TEMPORARY RESTORATIVE MATERIAL

- Temporary filling material for standard cavities and post-endodontic treatments.

Benefits

- Temporary Filling Material for Standard Cavities.
- Easily setting initiated by saliva.
- Excellent adaptability.
- Easy to remove.
- Adheres to dentine, expands slightly during the setting and hardens rapidly to ensure hermetical seal.
- Improved the mechanical properties for the quick temporary filling.

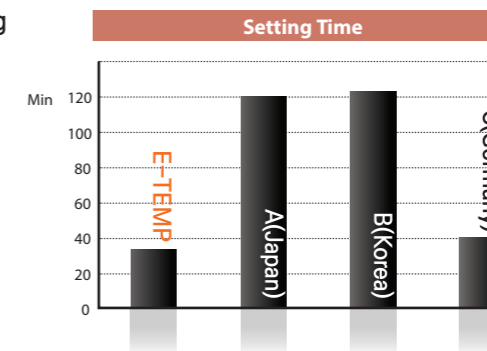


Directions

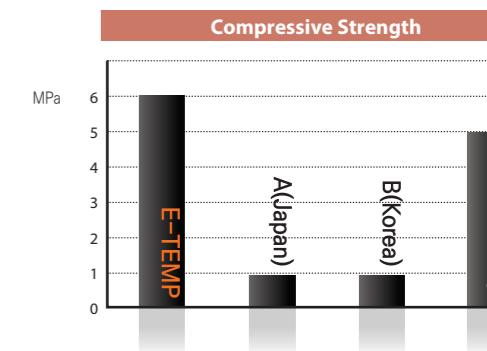
- Prepare and dry the cavity with a small cotton pellet.
- Transfer E-TEMP to the cavity using a suitable instrument and form the contour. In the case of occlusal Class I, the patient bites down on the surface, and then form the contour.
- After the patient close the mouth, E-TEMP will harden within 35 minutes. Recommend the patient to avoid the strong pressure or abrasion for at least 2 hours.

Package

- ITEM #2004-1001 30g



- This test is measured as the same condition at 37 degrees and 95% humidity in the laboratory(R&D DiaDent 2013)



- This test is measured as ISO 3107 regulations after the same setting time in the laboratory(R&D DiaDent 2013)

PACKAGE INFORMATION

P-33 Cell Package

Points remain sterile until opened
Box dimension: 78 x 19 x 50mm(W x H x D)



P-43 Vial Package

Contains 6 light weight plastic square vials with color coded caps
Box dimension: 77 x 17 x 50mm(W x H x D)



P-63 Spill Proof Package

6 compartments with outer paper box
Box dimension: 73 x 17 x 49mm(W x H x D)



SP-60 Slide Package

One hand slide open lid
Cellophane shrink-wrapped package
Box dimension: 70 x 13 x 45 mm (W x H x D)



DIATEMP™ A VISIBLE, LIGHT CURED TEMPORARY FILLING MATERIAL

DiaTemp is a high-viscosity light cured restorative material for temporary and intermediate restorations for inlays and onlays. It can also be used to reline prefabricated crowns and bridges or to seal implant screw channels.

Indications

- Temporary and intermediate restorations for inlays and onlays
- Sealing of implant screw access openings
- Relining of prefabricated crowns and bridges

Features

- Easy application: Convenient syringe dispense system with no mixing required
- Elastic: quick and simple removal in one piece
- High wear resistance with mechanical strength
- Sets fast with excellent adhesion
- Available in two colors: Yellow is ideal for anterior teeth and Blue is ideal for posterior teeth
- Blue color is ideal for contrast with implant screws

Packages

- 3 Syringes of 3g
- ITEM #A2003-1101 BLUE
- ITEM #A2003-1201 YELLOW



DIATEMP™ FLOW LIGHT CURED FLOWABLE TEMPORARY FILLING MATERIAL

DiaTemp Flow is a low-viscosity flowable light cured material for temporary and intermediate restorations of inlays and onlays. It can also be used to reline crowns and bridges.

Indications

- Temporary and intermediate restorations for inlays and onlays
- Sealing of implant screw access openings
- Relining of prefabricated crowns and bridges
- Block out material for retentive areas in the dental arch (before taking impressions)
- Temporary filling of abutment apertures
- Protective gingival margin coverage

Features

- Temporary restorations of prepared cavity
- Low viscosity: excellent flowability allows fast and easy application to various shapes of teeth and especially ideal for deep inlays
- Great for implant access holes
- Elastic: quick and simple removal in one piece
- Good adhesion for tight sealing of margins
- Strong and durable: high resistance to external force

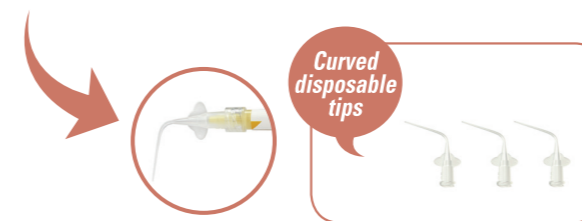
Packages

- 5 Syringes of 1.8g and 10 disposable tips
- ITEM #A2003-2101 Blue
- ITEM #A2003-2201 Yellow



DIAPEX® PLUS CALCIUM HYDROXIDE PASTE WITH IODOFORM

- Premixed Calcium Hydroxide + Iodoform paste for root canal treatment.
- Temporary root canal filling material after a pulpectomy.
- Ideal for the treatment of infected root canal and for vital pulpotomies in deciduous teeth.



Indications

- Intracanal medicament
- Apexification
- Exudation Control
- Periapical Lesions
- Root Resorption
- Temporary root filling
- Perforations
- Under developed Pulpless Teeth

Benefits

- Quiets "Hot Abscess"
- Disinfects canal
- Promotes Apexification
- Treats Traumatic Injuries
- Radiopaque
- Quick and simple application
- Antibacterial and Bacterostatic

Packages

- ITEM #A1001-501 Regular Kit Type A
 - 2g of paste and 20 disposable tips with cap
- ITEM #A1001-502 Regular Kit Type B
 - 2g of paste and 10 disposable tips with cap
- ITEM #A1001-503 Regular Kit Type C
 - 2g of paste and 4 disposable tips with cap
- ITEM #A1001-504 Refill Kit
 - 2g of paste
- ITEM #A1001-505 Intro Kit
 - 0.5g of paste and 4 disposable tips
- ITEM #1001-320 Clear Disposable Tips(Curved)
 - 20 disposable tips

DIAPASTE™ CALCIUM HYDROXIDE PASTE WITH BARIUM SULFATE

Characteristics

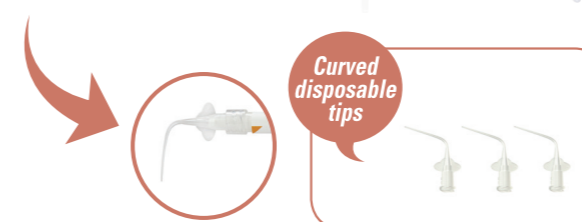
- Premixed Calcium Hydroxide + Barium Sulfate paste for root canal treatment.
- Temporary root filling.
- Root canal filling for primary teeth.
- Use after pulp extirpation treatment.
- Filling on the pulpotomy.
- Temporary Pulp Capping.

Benefits

- Water Soluble: Easy to clean and remove, reduce operative time
- Easy and quick access
- Radiopaque
- Antibacterial

Packages

- ITEM #A1001-401 Regular Kit Type A
 - 2g of paste and 20 disposable tips with cap
- ITEM #A1001-402 Regular Kit Type B
 - 2g of paste and 10 disposable tips with cap
- ITEM #A1001-403 Regular Kit Type C
 - 2g of paste and 4 disposable tips with cap
- ITEM #A1001-404 Refill Kit
 - 2g of paste
- ITEM #A1001-405 Intro Kit
 - 0.5g of paste and 4 disposable tips
- ITEM #1001-320 Clear Disposable Tips(Curved)
 - 20 disposable tips



DIA-PROSEAL™ ROOT CANAL SEALING MATERIAL

- DIA-PROSEAL™, root canal sealer is an epoxy resin-based formula with outstanding flow characteristics.



Benefits

- The ideal root sealer with Low Shrinkage reduced gapping between the sealer and canal wall.
- Low solubility makes it resistant to breaking down over time.
- 1:1 paste to paste manual mixing system.
- Fast and Easy Preparation and Less Waste.
- Mixing and handling is very smooth.
- Excellent flow properties allow it to reach and seal lateral canals, making it especially suited to warm gutta-percha methods.
- Low risk of cytotoxicity with short setting time.
- Better biocompatibility for a solution to the sensitivity and periapical inflammation.
- High radiopacity
- Lightly coated Gutta Percha Points with a good film thickness.

Directions

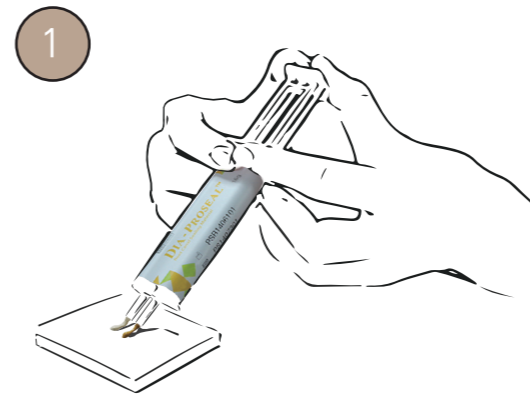
- Prior to application of DIA-PROSEAL™, prepare and shape the root canal using endodontic technique.
- Remove all of debris in the root canal. And disinfect and clean the root canal with Sodium Hypochlorite or EDTA solution and dry it.
- Using DIA-PROSEAL™ in dual syringes, press the syringe and squeeze equal volume units of Base material(yellow) and Catalyst material(white) in the ratio of 1:1 on a mixing pad.
- Mix the Base material(yellow) and Catalyst material(white) with a spatula for 10-20 sec to be mixed into a ivory color completely.
- Apply only a light coating of DIA-PROSEAL™ to Gutta Percha Points(silver or titanium root canal points also) and put points into the apex slowly.
- Please check the seal by X-Ray.

Package

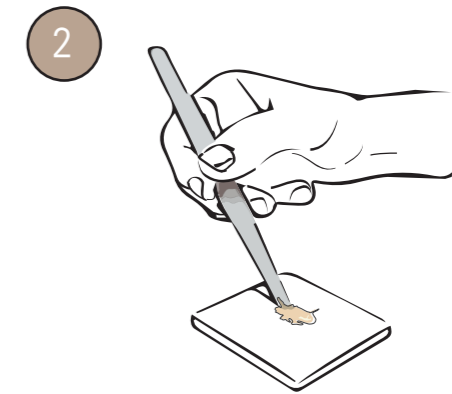
- **ITEM#1003-201**
 - 1 Syringe of 16g (Base 6.5g + Catalyst 9.5g)
 - 1 Mixing pad
 - 1 Spatula
- **ITEM# 1003-202**
 - 1 Syringe of 4g
 - 1 Mixing pad
 - 1 Spatula
- **ITEM#2001-6113- Spatula for DIA-PROSEAL™**
- **ITEM#2001-6114- Mixing pad for DIA-PROSEAL™**

DIA-PROSEAL™ ROOT CANAL SEALING MATERIAL

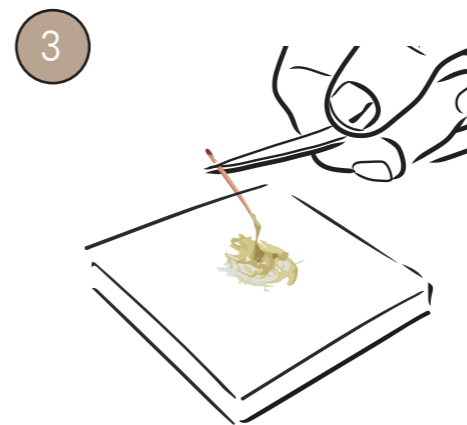
INSTRUCTIONS



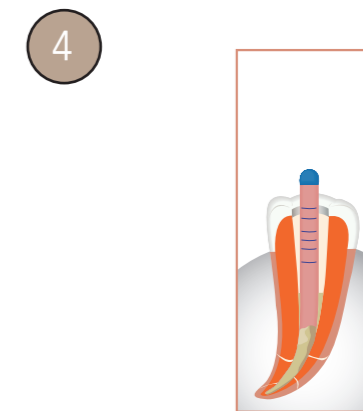
- Press the syringe with two hands to apply Base and Catalyst in 1:1 on the mixing pad



- Mix Base and Catalyst for 10-20 sec with the spatula as 1:1 paste to paste manual mixing system

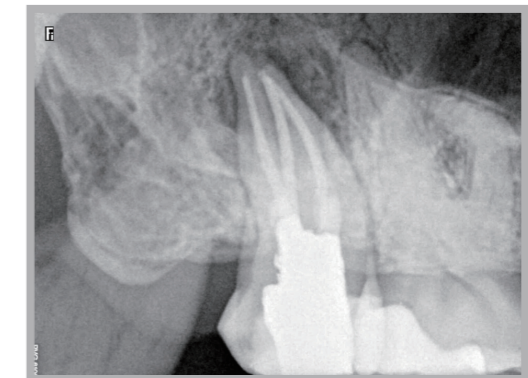
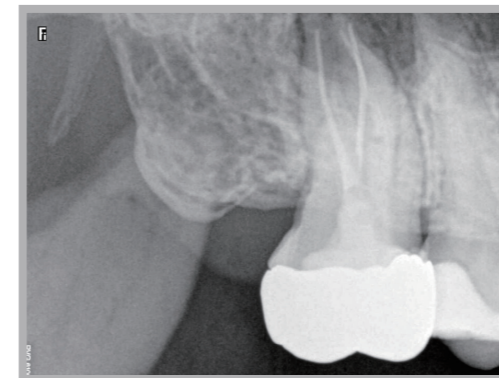


- Coat Gutta Percha Points in the mixed DIA-PROSEAL™



- Put Gutta Percha Points into the root canal

RADIOGRAPHS



- High radiopacity with DIA-PROSEAL™

DIA-ROOT™ BIO MTA

MINERAL TRIOXIDE AGGREGATE

NEW

Root Repair Materials with excellent biocompatibility and offers distinct advantages for root canal repair procedures. DIA-ROOT™ BIO MTA is used to restore the damaged areas of root canal to normal function and appearance, quickly and efficiently.

Indications

- Repair of Root Resorption and Perforations
- Direct Pulp capping
- For Pediatric Pulpotomies
- Root-End Filling
- Apical plug during apexification

Benefits

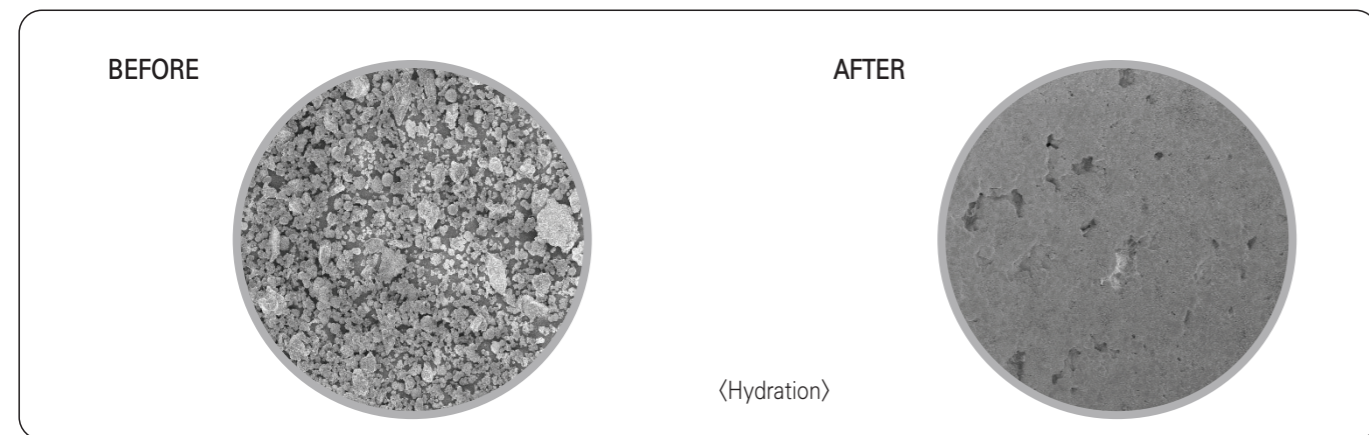
- Good Biocompatibility
- Outstanding Sealing Capabilities
- White powder is ideal for Anterior teeth
- Antibacterial Effect(pH 12)
- Easy Handling Properties
- Resists washout

Directions

- Open the cap of MTA powder
- Pour the powder into the mixing pad
- Put the distilled water onto the powder: Mixing Ratio 0.5g/0.2225g(Powder/Liquid)
- Wet the powder and mix it gently for few seconds
- Carry the mixture on the part for the treatment

Packages

- ITEM #1003-601
 - MTA Powder 0.5g
 - 1 Mixing Pad
 - 1 Spatula



SEM pictures of after Hydration DIA-ROOT™ BIO MTA show outstanding sealing ability

DIA-ROOT™ BIO SEALER

BIOCERAMIC ROOT CANAL SEALING MATERIAL

NEW

DIA-ROOT™ BIO SEALER is a bioceramic MTA-based root canal sealing material with excellent biocompatibility and is highly radiopaque. DIA-ROOT™ BIO SEALER is used for permanent obturation of root canals and is suitable for use in conjunction with all obturation techniques involving gutta-percha.

Indications

- Permanent root canal obturation
- Repair of root perforation

Benefits

- High radiopacity: 8.1mm
- Durable sealing of root canal with low solubility (0.95%)
- Washout resistant
- Outstanding flow characteristic allows material to adapt well even in complicated canals
- Pre-mixed for easy, convenient, and fast application
- Adequate setting time
- Ready to use formula in a prefilled and injectable syringe
- High pH for extended antibacterial action (pH 12)

Packages

- ITEM #1003-701
 - 1 syringe x 2g
 - 20 Disposable tips
 - 20 endo stops & 1 Silicon cap



Setting time



Flow (mm)



Film thicknesses (µm)



Solubility (%)



Radiopacity (mm)

EVOFILL™ DUO**CORDLESS WARM VERTICAL COMPACTION & BACKFILL
OBTURATION DEVICE WITH BUILT-IN GP CARTRIDGE**

EvoFill Duo is the new advanced cordless obturation system that consists of EvoFill backfill obturation device and EvoPack warm vertical compaction device. With the innovative electric motor, EvoFill features precisely controlled motorized gutta percha extrusion, fast heating bendable thin tip, and digital control panel. Save valuable time with hygienic single-use gutta percha cartridge that provides reliable result every time. EvoPack effectively and tightly compacts and seals all canals including lateral canals. It features LED light-guided condenser, instant heating, and digital temperature control. Both units can be fully charged within 90 minutes.

Features

EvoPack: Vertical Compaction Device

- Innovative LED light-guided condenser
- Quick heating tip reaches high level of temperature(250°C) within one (1) second
- Excellent result with warm and vertical compaction for all canals including lateral canals. EvoPack offers reliable results with tightly sealed root canals
- Automatically recognize tip size of heating condenser
- Adjustable Temperature Setting (170°C, 200°C, 250°C) and time (3 seconds, 5 seconds) for safety
- Displays error status in case of power or tip disconnection
- Simple one-button operation

EvoFill: Backfill Obturation System

- Controlled, precise motorized Gutta Percha extrusion
- Fast heating 360° swivel cartridge needle
- Hygienic disposable cartridges to prevent secondary infections
- 3 different Temperature Settings (160°C, 180°C, 200°C) to control extrusion speed
- Easier, motorized extrusion and less hand fatigue
- No mess, easy clean up

Package

- **ITEM #4005-1001 Regular Kit**
 - EvoFill Handpiece, EvoPack Handpiece & Dual Charger
 - Accessories: Safety Cap(1ea), Heating Condenser #F/FM(1ea each), Power Adapter & Cord, Scrubbing Brush(1ea)
 - *Gutta Percha Cartridge is not included in the Regular Kit.

Accessories

- **ITEM #4005-1101 EvoFill Handpiece**
- **ITEM #4005-1201 EvoPack Handpiece**
- **ITEM #4005-2010 Gutta Percha Cartridge(20ea)**
- **ITEM #4005-2020 Dual Charger**
- **ITEM #4005-2030 Safety Cap**
- **ITEM #4005-2050 Battery**
- **ITEM #4005-2060 Power Adapter & Cord**
- **ITEM #4005-2070 Heating Condenser #XF**
- **ITEM #4005-2071 Heating Condenser #F**
- **ITEM #4005-2072 Heating Condenser #FM**
- **ITEM #4005-2073 Heating Condenser #M**
- **ITEM #4005-2074 Heating Condenser #ML**
- **ITEM #4005-2075 Heating Condensers #F/FM(1ea each)**
- **ITEM #4005-2080 Multi Tool**
- **ITEM #4005-2090 Scrubbing Brush**

**DIA-DUO****CORDLESS WARM VERTICAL COMPACTION &
BACKFILL OBTURATION DEVICE**

Dia-Duo is new developed Cordless Obturation System included Duo-Pen warm vertical compaction device and Duo-Gun backfill obturation device. Duo-Pen offers excellent warm vertical compaction with quick heating tip. Duo-Gun with quick heating system allows the fast and perfect obturation delivery. Duo-Gun and Duo-Pen are located in one charger.

Packages

- **ITEM #4007-2000 Regular Kit**
 - Duo-Gun Handpiece, Duo-Pen Handpiece & Duo-Charger
 - Accessories: Heating Condenser #.04-50, Heating Condenser #.06-50, Duo-Pen Battery, Disposable Sheaths (200ea/Box), GP Obturation Tip(23G, 4ea), Gutta Percha Obturator (100ea), Duo-Gun Battery, Safety Cap(2ea), Plunger set, Plunger O-Ring Assembly(2ea), Multi Tool, Scrubbing Brush, Power Adapter, AC Power Cord

Accessories

- **ITEM #4007-2010 Duo-Gun Handpiece**
- **ITEM #4007-2020 Duo-Pen Handpiece**
- **ITEM #4007-2030 Duo Charger**
- **ITEM #4007-2080 Duo-Gun Battery**
- **ITEM #4007-2090 Duo-Pen Battery**

* Go to Page 20 & 21 to find all of Accessories.



DUO-PEN CORDLESS WARM VERTICAL COMPACTION DEVICE

Duo-Pen is Cordless Warm Vertical Compaction Device and also Duo-Pen has the optimum functionality and quality and is full proven effective for the downpack obturation system.

Techniques

- **Softening** the root canal filling material (Gutta Percha Points) during root canal treatment
- **Spreading** the root canal filling material (Gutta Percha Points) laterally and vertically
- **Cutting** the root canal filling material (Gutta Percha Points)
- **Compacting** the root canal filling material (Gutta Percha Points) using heat

Features

- Excellent result with warm and vertical compaction for all canals including lateral canals.
- Duo-Pen offers reliable results with tightly sealed root canals
- Cordless, ergonomic and lightweight design
- Quick heating tip reaches high level of temperature within one (1) second to save treatment time
- Display in the handpiece shows the remaining battery power, error and setting temperature
- The effective temperature control prevents the pen tip from burning out
- Duo-Pen handpiece automatically recognizes the size of tip
- Color-coded heating condensers are available in various sizes (#.04-40, .04-45, .04-50, .06-50, .08-55) for easy identification
- Three temperature settings (170°C, 200°C, 230°C)

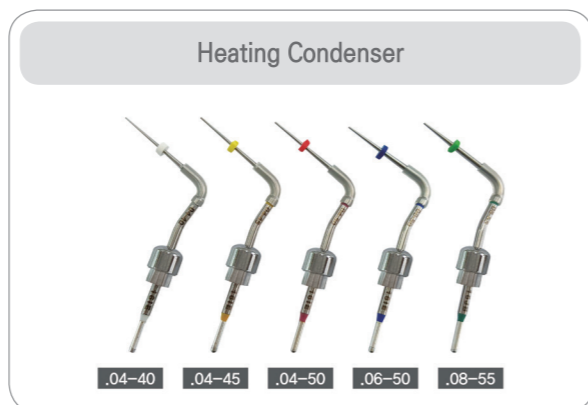


Packages

- **ITEM #4007-2002 Regular Kit**
 - Duo-Pen Handpiece & Charger
 - Accessories: Heating Condenser #.04-50, Heating Condenser #.06-50, Disposable Sheaths (200ea/Box), Power Adapter, AC Power Cord

Accessories

- ITEM #4007-2020 Handpiece
- ITEM #4007-2032 Charger
- ITEM #4007-2070 Heating Condenser(.04-40) 1ea
- ITEM #4007-2071 Heating Condenser(.04-45) 1ea
- ITEM #4007-2072 Heating Condenser(.04-50) 1ea
- ITEM #4007-2073 Heating Condenser(.06-50) 1ea
- ITEM #4007-2074 Heating Condenser(.08-55) 1ea
- ITEM #4007-2075 Heating Condenser(.04-50/.06-50), 1ea each
- ITEM #4007-2090 Battery
- ITEM #4007-2270 Disposable Sheath(200ea/box)
- ITEM #4007-2280 Power Adapter
- ITEM #4007-2287 AC Power Cord



DUO-GUN CORDLESS BACKFILL OBTURATION DEVICE

Duo-Gun is Cordless Obturation System Device, Duo-Gun offers fast and easy obturation delivery. With this effective obturation system and technique, optimum results are achieved.

Features

- Cordless and Compact design allows complete freedom of movement
- Reliable Gutta Percha filling to the desired level without delay
- Variable Temperature settings (140°C, 170°C, 200°C): precise control of obturation flow
- Quick heating system: Temperature reaches 200°C within 15 seconds
- Fast and continuous flow of filling tightly seals the canal
- Left-handed person can push on/off button easily, both sides of handpiece have the power button
- Both displays of Handpiece show the remaining battery power, error and setting temperature
- The ergonomic design enables the obturation with a minimum input of force
- Durable heater is installed to minimize minor troubles
- Maintain the stable temperature during the operation with the accurate temperature control system

Packages

- **ITEM #4007-2001 Regular Kit**
 - Duo-Gun Handpiece & Charger
 - Accessories: GP Obturation Tips (23G, 4ea), Plunger Set, Multi Tool (1ea) Safety Caps (2ea), Gutta Percha Obturator (100ea), Plunger O-ring Assembly (2ea), Scrubbing Brush, Battery, Power Adapter, AC Power Cord

Accessories

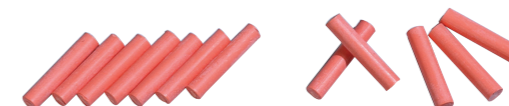
- ITEM #4007-2010 Handpiece
- ITEM #4007-2031 Charger
- ITEM #4007-2080 Battery
- ITEM #4007-2120 GP Obturation Tip(23G, 4ea)
- ITEM #4007-2121 GP Obturation Tip(25G, 4ea)
- ITEM #4007-2130 Safety Cap (2ea)
- ITEM #4007-2140 Plunger Set
- ITEM #4007-2150 Plunger O-Ring Assembly (2ea)
- ITEM #4007-2160 Multi Tool (1ea)
- ITEM #4007-2161 Scrubbing Brush (1ea)
- ITEM #4007-2280 Power Adapter
- ITEM #4007-2287 AC Power Cord
- ITEM #181-101 Gutta Percha Obturator(Medium type, 100ea)



GUTTA PERCHA OBTURATOR

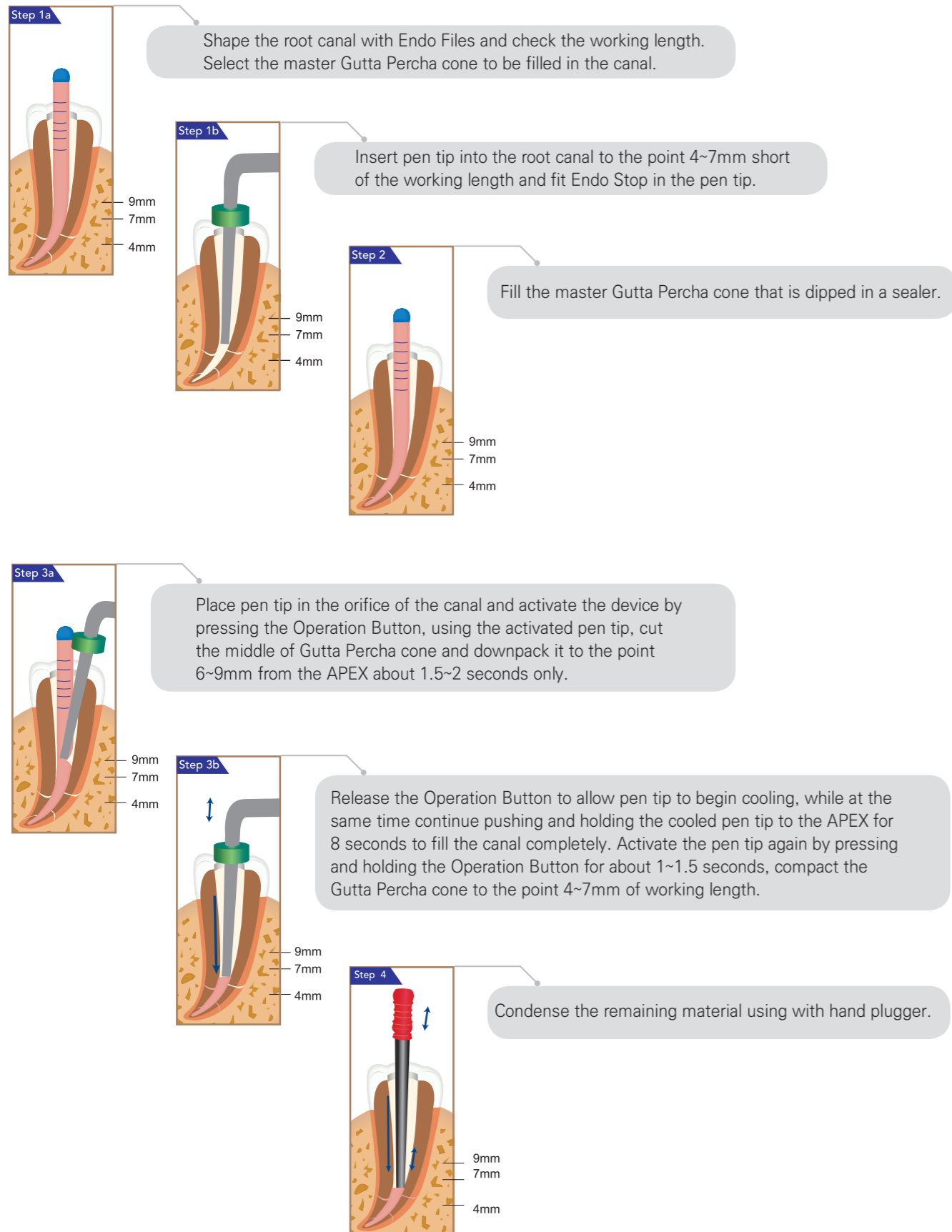


- **ITEM #181-101 Medium type**
 - Designed to use with Duo-Gun.
 - Specially formulated Gutta Percha with excellent flowing characteristics.
 - Easy to heat
 - Pkg. of 100



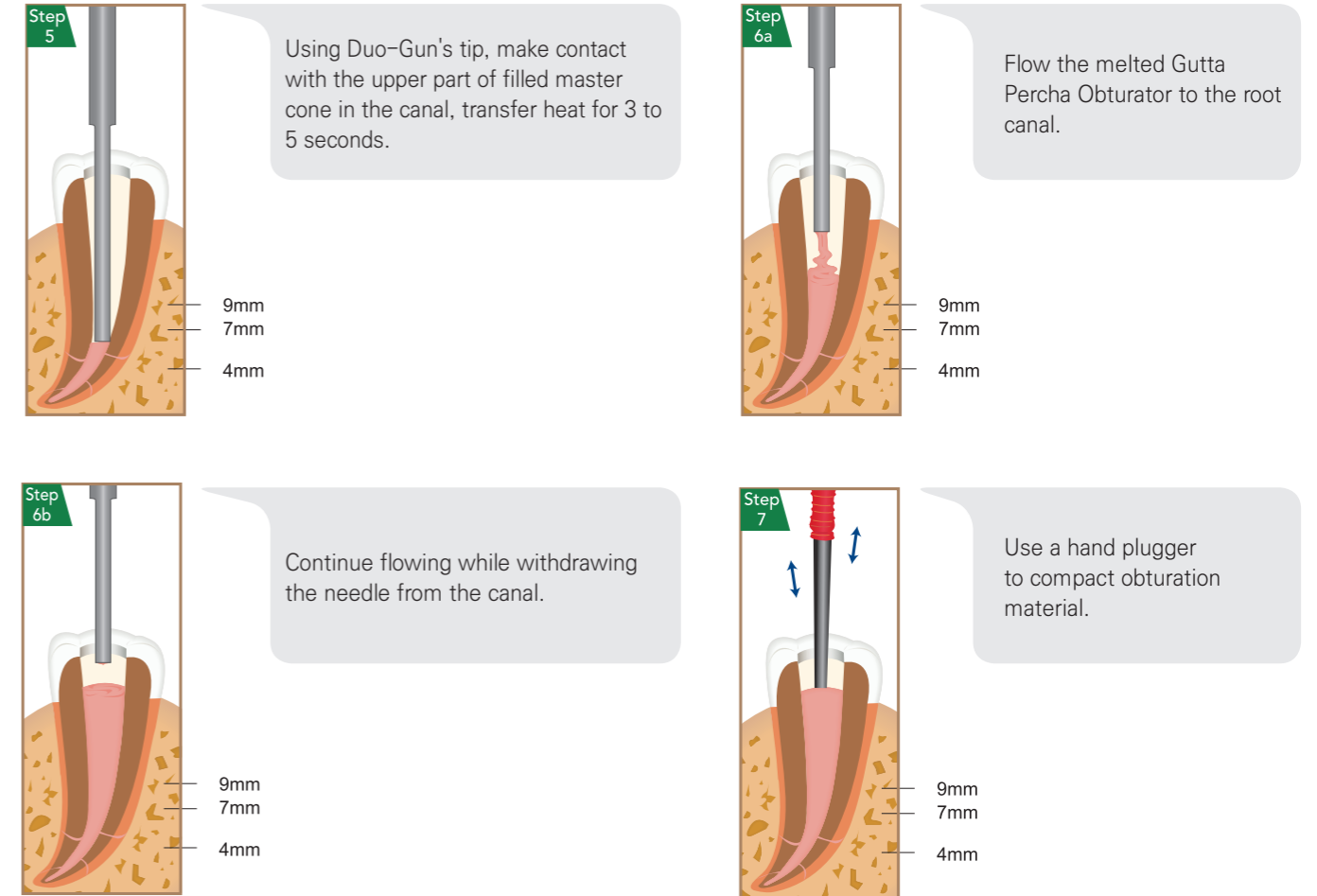
ROOT CANAL OBTURATION TECHNICAL SEQUENCE

DOWNPACK OBTURATING WITH DUO-PEN

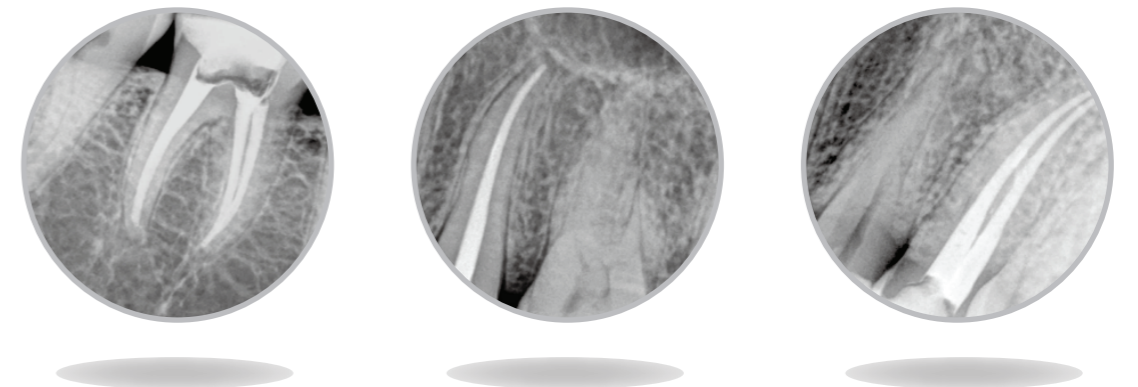


ROOT CANAL OBTURATION TECHNICAL SEQUENCE

BACKFILL OBTURATING WITH DUO-GUN



Radiographs



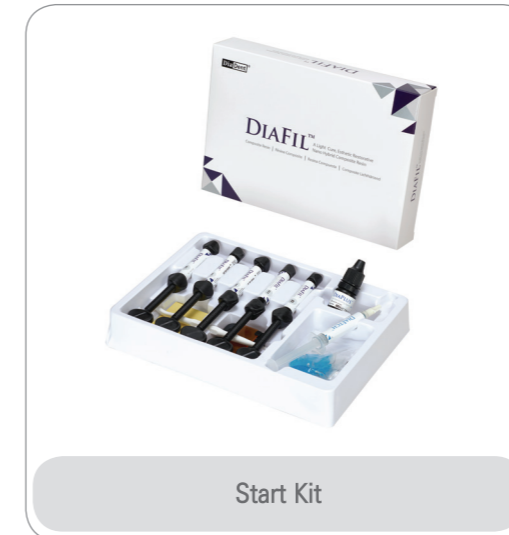
Perfect and tightly sealed root canals after the root canal warm obturation technique with Duo-Gun & Duo-Pen.

COSMETIC & RESTORATIVES

- Restorative Nano Hybrid Composite Resin
- Flowable Restorative Composite Resin
- Light Cure Bonding Agent
- Etching Gel
- Temporary Dental Cement
- Cordless LED Curing Light

DIAFIL™ A LIGHT CURE, ESTHETIC RESTORATIVE NANO HYBRID COMPOSITE RESIN

- Nano hybrid composite resin for use in Anterior and Posterior restorations



Start Kit



Refill Package



Capsule Type

Benefits

- Unique fillers offer minimum polymerization shrinkage which helps reduce stress and sensitivity on the tooth potentially
- Has excellent fracture toughness, high tensile, compressive strengths for long lasting results
- Very easy handling of acceptable viscosity and good marginal adaptation
- Remarkable color stability and superior quality of esthetics
- High Level of radiopacity

Packages

• Start Kit

- 5 composite resin syringes (4g)
- 1 Bottle bonding agent(5ml)
- 1 Etching gel syringe(3ml)
- Accessories: 50 brush tips, 1 brush handle, mixing well, mixing pad, 10 disposable tips, shade sheet

Set	Composite Resin Shades	ITEM No.
START KIT A SET	A1, A2, A3, A3.5, B2	A2001-1101
START KIT B SET	A2, A3, A3.5, B2, B3	A2001-1102
START KIT C SET	A1, A2, A3, A3.5, C2	A2001-1103

• Refill Package

- 1 syringe x 4g

A1	A2001-1201	B2	A2001-1207
A2	A2001-1202	B3	A2001-1208
A3	A2001-1203	C2	A2001-1210
A3.5	A2001-1204	C3	A2001-1211
A4	A2001-1205	A20	A2001-1212
B1	A2001-1206	A30	A2001-1213

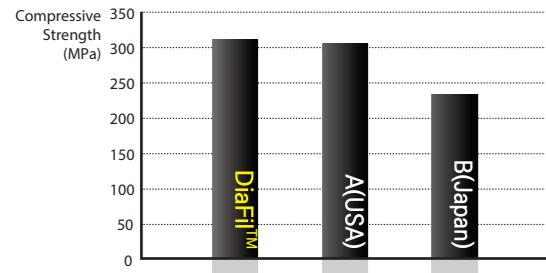
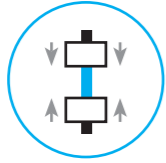
• Capsule Type

- 0.25g x 20 capsules

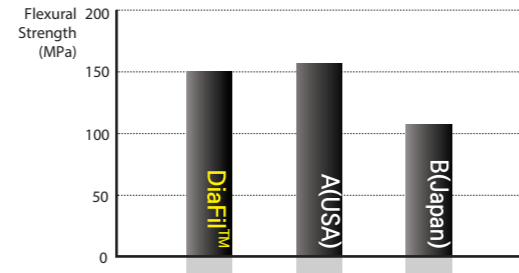
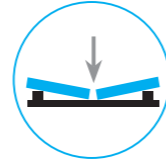
A1	A2001-1405
A2	A2001-1401
A3	A2001-1402
A3.5	A2001-1403
B2	A2001-1404

PHYSICAL PROPERTIES

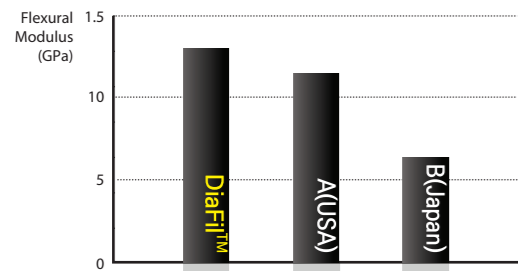
Compressive Strength



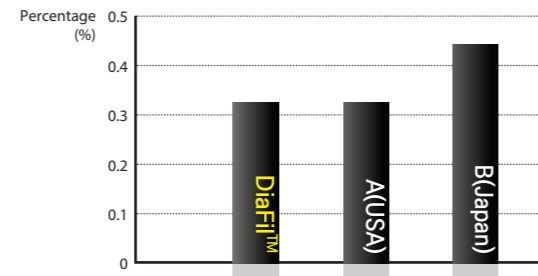
Flexural Strength



Flexural Modulus



Shrinkage

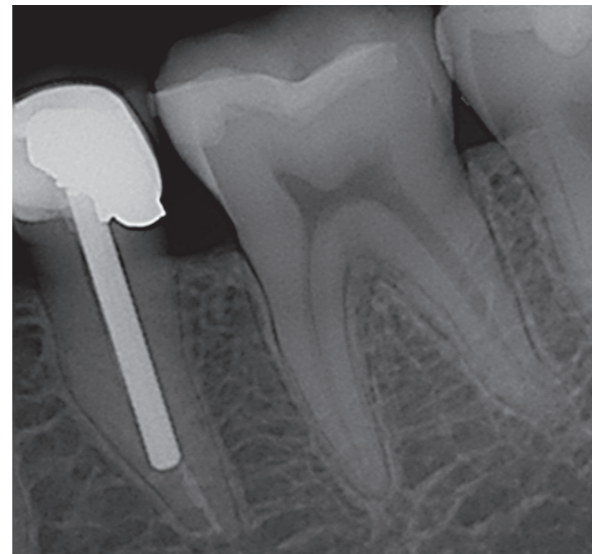
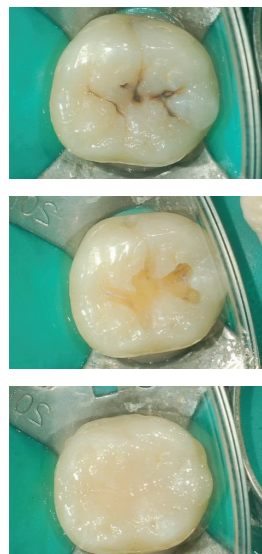


These tests are measured in the laboratory (DiaDent R&D Team 2018)

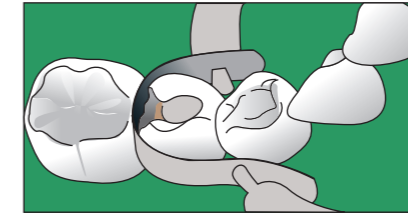
● POSTERIOR RESTORATION

● ANTERIOR RESTORATION

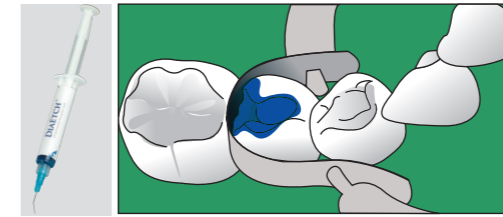
● HIGH RADIOPACITY



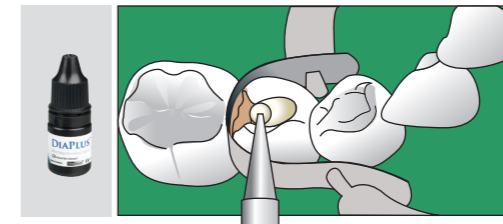
TECHNIQUE GUIDES



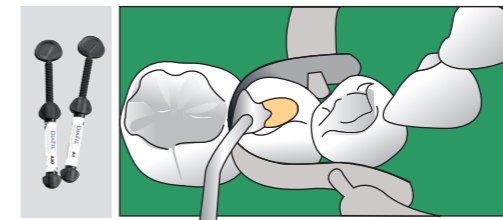
1. Prepare the tooth : Isolate the tooth with rubber dam and clean the tooth



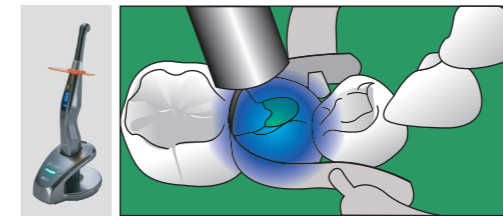
2. Etch : Apply DiaEtch(etchant) to enamel and dentin and wait 15 seconds. Rinse and blot the excess water, leaving tooth moist



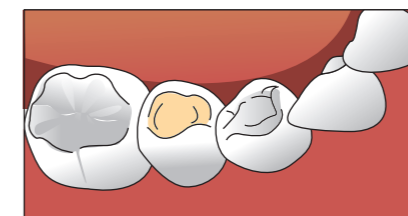
3. Bond : Apply 3 consecutive coats of DiaPlus (bonding agent) to enamel and dentin and wait 15 seconds. Dry gently for 3 seconds and light cure for 20 seconds



4. Place composite resin : Place DIAFIL™(composite resin) in layers less than 2.0mm



5. Light Cure : Cure each increment for 20 seconds



6. Finish and Polish

DIAFIL™ FLOW LIGHT CURED FLOWABLE RESTORATIVE COMPOSITE RESIN

Flowable composite with very easy handling and high strength



Benefits

- Enables to be used in various restorative procedures : Class III, V and IV direct restorations
A liner for Class I, II
Pit & Fissure sealant where is required
Well suited for minimally invasive dentistry
- Excellent tensile strength and low shrinkage
- High radiopaque materials

Packages

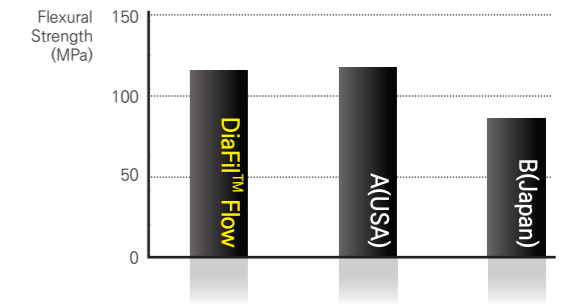
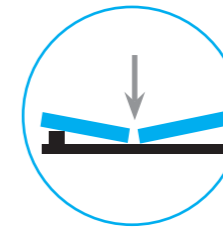
- **Economic Package**
 - Flowable Resin 2g x 4 syringes (Available shade A1, A2, A3, A3.5, B2, B3, C2, A20, A30)
 - 40 disposable tips(black)
 - Shade Sheet
- **Refill Package**
 - Flowable Resin 2g x 1 syringe (Available shade A1, A2, A3, A3.5, B2, B3, C2, A20, A30)
 - 10 disposable tips(black)

SHADE	Economic Pkg.	Refill Pkg.
A1	A2001-4101	A2001-4201
A2	A2001-4102	A2001-4202
A3	A2001-4103	A2001-4203
A3.5	A2001-4104	A2001-4204
B2	A2001-4105	A2001-4205
B3	A2001-4106	A2001-4206
C2	A2001-4107	A2001-4207
A20	A2001-4108	A2001-4208
A30	A2001-4109	A2001-4209

PHYSICAL PROPERTIES

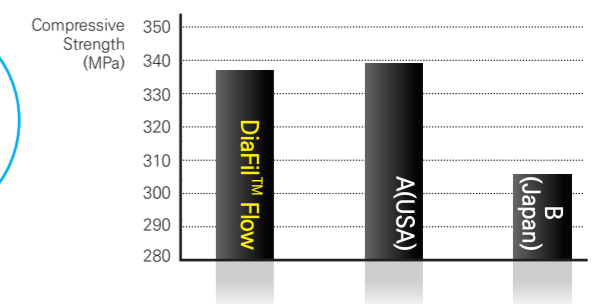
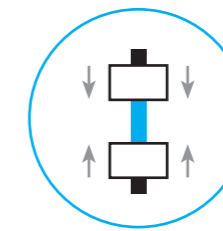
Flexural Strength

The flexural strength is measured by pressing a stick-typed experimental material. Flexural strength is the value obtained when the sample breaks, fixing both ends of sample and pressing in the middle of it. This test combines the forces found in compression and tension.



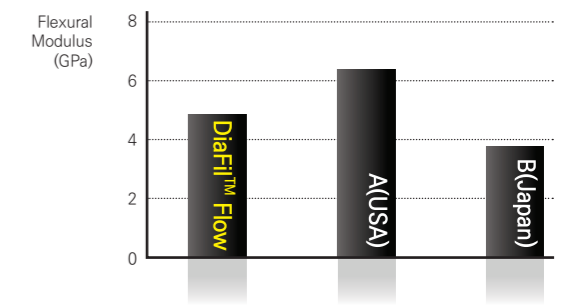
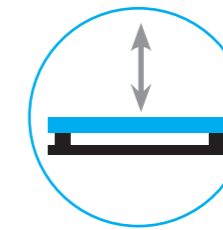
Compressive Strength

Compressive strength is particularly important because it is related with masticating forces. Rods are made of the material and simultaneous forces are applied to the opposite ends of the sample length vertically. The sample failure is a result of shear and tensile forces.



Flexural Modulus

Flexural modulus is a method of defining a material's stiffness. A low modulus indicates high flexible material.



These tests are measured in the laboratory (DiaDent R&D Team 2018)

● RESTORATION WITH DIAFIL™FLOW



DIAPLUS™ SINGLE COMPONENT BONDING AGENT

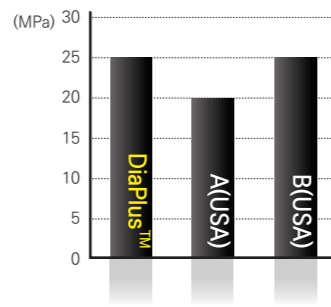
Recommended for all direct composite restorations, light-cured bonding procedures



Benefits

- High dentin, enamel bond strength performance
- Available in all classes of direct composite restoration
- Indirect restorations of Porcelain, Amalgam or Composite Repair after light curing with a minimal film thickness
- Ethanol-based bonding agent enables to maintain its exceptional bond strength

Shear bond strength(MPa)



Packages

- ITEM #A2001-2101
- one-bottle bonding agent (1 bottle x 5ml)

DIAETCH™ 37% A 37% ETCHING GEL PHOSPHORIC ACID

A phosphoric acid is used in etch enamel and/or dentin



Benefits

- Phosphoric acid etching of enamel and dentin with ideal thickness
- Quick and effective application to the desired place
- Enables to rinse completely and easily from the tooth surface
- High biocompatibility

Packages

- Economic Package Type A**
- ITEM #A2001-3101 - 5 Syringes x 5ml and 20 disposable tips
- Regular Package**
- ITEM #A2001-3103 - 2 Syringes x 3ml and 10 disposable tips
- Refill Package Type A**
- ITEM #A2001-3202 - 1 Syringe x 5ml and 5 disposable tips

DISPOSABLE BRUSHES

- Flexible adhesive tip allows restorations and small objects of all kind to be picked up, held, carried and placed quickly and easily



Size	ITEM NO.
Small	2001-6301
Medium	2001-6302
Large	2001-6303

(Pkg. of 100)

DiaCem™ TempNE NON EUGENOL TEMPORARY CEMENT

- Non-Eugenol Temporary cement for trial cementing restorations or temporary crowns and bridges



Features

- Easy and precise direct dosing
- No hand mixing and Stable mix of base and catalyst viscosity with the automix tip
- High bond strength to prevent leakage and sensitivity to cold and heat
- Easy removal for the patient comfort
- Low film thickness with high compressive and flexural strength
- Fast working time(3 min) and setting time(5 min in the mouth)

Packages

- ITEM #2004-2101 2 Syringes of 10g, 10 Automix tips
- ITEM #2001-6112 20 Automix tips

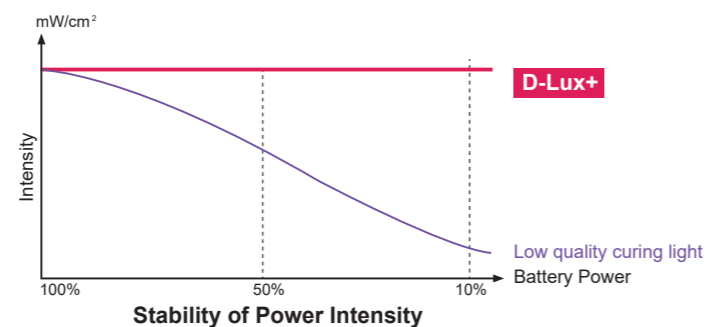
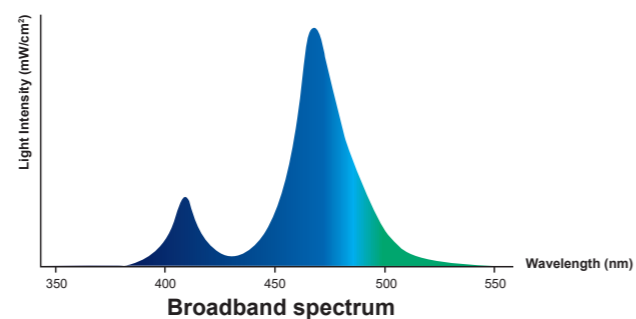
D-LUX+ CORDLESS LED CURING LIGHT NEW

D-LUX+ is a high performance dual-wavelength Cordless LED Curing Light. Built and designed with the highest quality and durability, its dual-wavelength can efficiently, effectively, and uniformly polymerize all light-cured dental materials. At its maximum light intensity output of 2,400mW/cm², it can complete all restorations safely and efficiently.

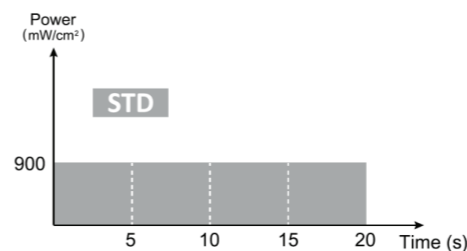


Features

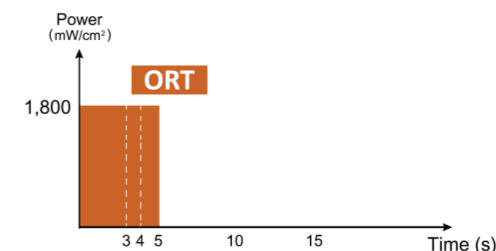
- A high intensity output of **2,400mW/cm²** and 10W LED offers short curing time and efficient polymerization
- 360° swivel light probe and silicone ring tip ensure patient comfort
- **Dual-wavelength** with 4 LED lamps can efficiently polymerize all dental materials
- Broadband spectrum of **385nm~515nm**
- Five (5) versatile curing modes allow flexible curing time and power intensity including 1second curing and Orthodontic curing mode
- **Wireless battery charging system** eliminates any potential charging contact problems
- High capacity 2,600mAh Li-ion battery offers longer battery life
- Built-in Light Intensity Measurement Sensor provides peace of mind so clinicians can always verify if the intensity is within normal range
- Designed ergonomically, the handpiece is light and elegant so it can easily reach all curing sites and offers maximum comfort for both patient and clinician



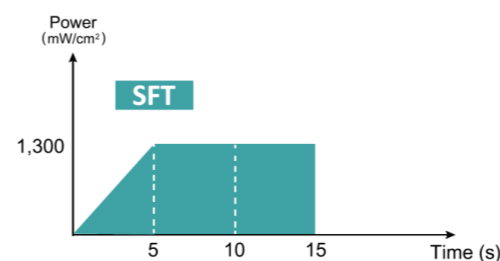
5 Curing Modes



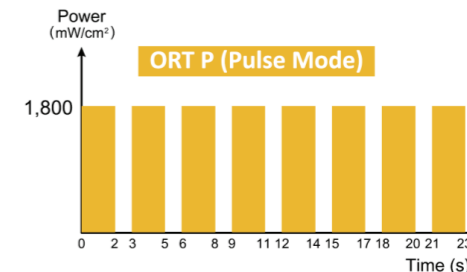
STD (Standard):
900mW/cm²(±10%) light intensity for 5, 10, 15, or 20 seconds



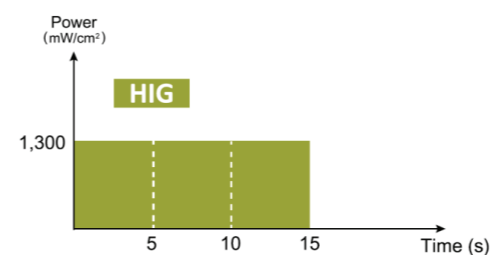
ORT (Orthodontic):
1,800mW/cm²(±10%) light intensity for 3, 4, 5 seconds or P (pulse)



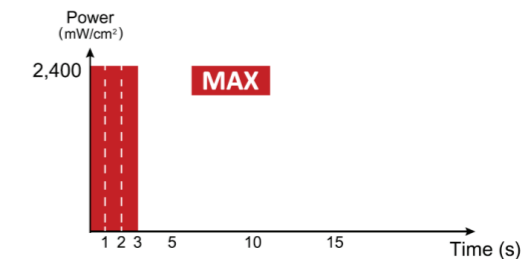
SFT (Soft start):
Light intensity gradually increases to 1,300mW/cm²(±10%) for 10 or 15 seconds



ORT P (Orthodontic Pulse Mode):
1,800 mW/cm² (±10%) of light turns on for 2 seconds and then off for 1 second eight times



HIG (High Power):
1,300mW/cm²(±10%) light intensity for 5, 10, or 15 seconds



MAX (Max Power):
2,400mW/cm²(±10%) light intensity for 1, 2, or 3 seconds

Product Features

Wireless battery charging system

Dual-wavelength with 4 LED lamps, Broadband Spectrum of 385nm~515nm

Built-in light intensity sensor

Package

- **ITEM #4008-1001 Regular Kit**
 - D-Lux+ Handpiece & Charger
 - Light Probe
 - Light Protector
 - Disposable Sheaths(200ea/Box)
 - Power Supply(Adapter), Power Cord

Accessories

- **ITEM #4008-1110 Handpiece**
- **ITEM #4008-1120 Charger**
- **ITEM #4008-1130 Light Probe**
- **ITEM #4008-1140 Battery Pack**
- **ITEM #4008-1150 Light Protector**
- **ITEM #4008-1160 Power Supply(Adapter)**
- **ITEM #4008-1161 Power Cord**
- **ITEM #4008-1170 Disposable Sheaths(200ea/Box)**

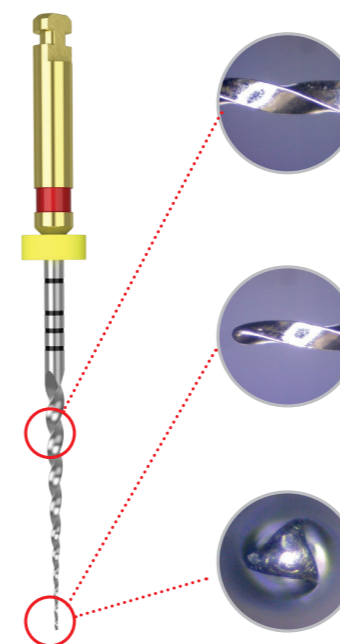
ENDODONTIC INSTRUMENTS

- Nickel Titanium Rotary Files
- EDTA Root Canal Preparation Cream
- EDTA 17% Solution
- Endodontic Micro-Motor
- Flexible K-File
- Lentulo
- Probe File
- Gate Drills
- Peeso Reamers
- Nickel Titanium Hand Files
- Stainless Steel Hand Files
- Stainless Steel Spreader
- Stainless Steel Plugger
- Endo Condenser
- Endo Gauges
- Irrigation Syringes
- Endodontic Irrigation Tips

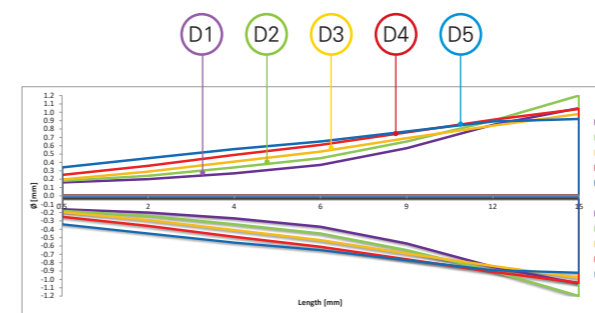
DIA-PT™ FILE & DIA-X FILE

NICKEL TITANIUM ROTARY FILES

- **Superior Cutting Efficiency**
 - Allows stronger and more sharp blades to more deeper in the canal
 - A triangular cross section reduces contact with the canal wall
- **High Flexibility**
 - Offers outstanding flexibility and reduces a user fatigue
 - Has high corrosion resistance with a coated surface of files
- **Short Shaping Time**
 - Decreases total shaping time versus a traditional rotary technique
 - Easily shape in calcified or highly curved canals



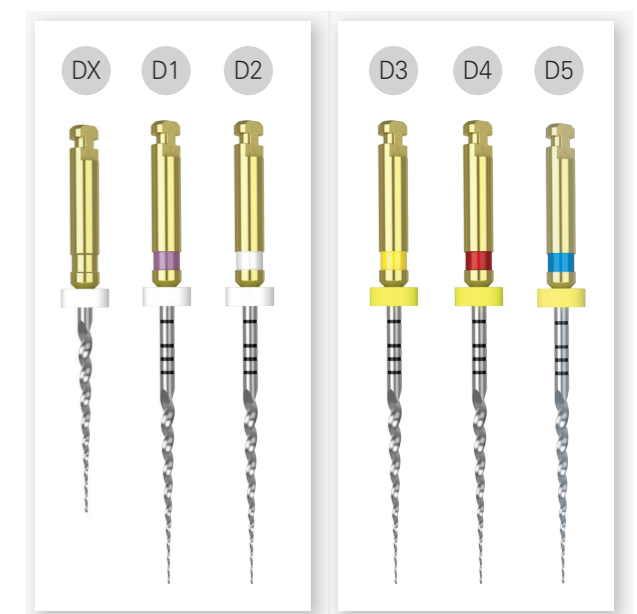
Rate of Taper



- Easy to confirm the size due to using Depth Markings and ISO color coded.
- Minimizes pressure to files with advanced stability.
- Improved performance for entering root canal and efficiently removable debris.
- Makes it excellent cutting.

Shaping

Finishing



DIA-X FILE NICKEL TITANIUM ROTARY FILES WITH GOLD HEAT TREATMENT



Dia-X File is the nickel titanium rotary files with **Gold Heat Treatment** can be achieved greater flexibility than other Nickel Titanium Files and offer smoother and safer progression in the root canal. The fracture resistance has been increased 143% after Gold Heat Treatment.

Size	19MM	21MM	25MM
#DX	571-100		
#D1		571-101	571-201
#D2		571-102	571-202
#D3		571-103	571-203
#D4		571-104	571-204
#D5		571-105	571-205
#Asst D1/D4		571-191	571-291
#Asst DX/D3		571-192	571-292

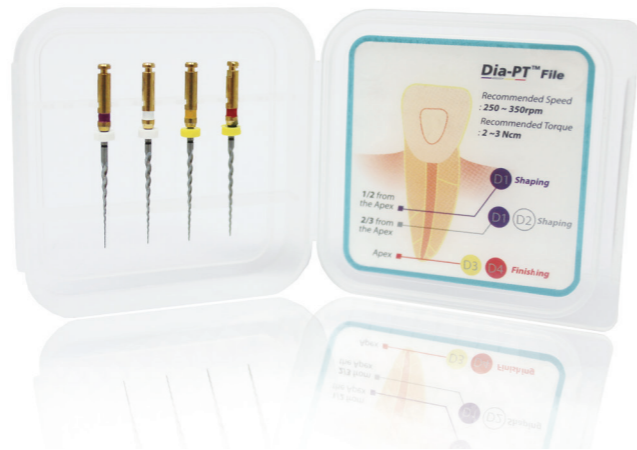
(Pkg. of 4)

DIA-PT™ FILE NICKEL TITANIUM ROTARY FILES

Dia-PT™ File ensures rapid and high quality canal shaping with new cutting efficiency. The difference of Dia-PT™ File nickel-titanium rotary files with a uniform shape can be achieved superior flexibility and precision for successful procedures.

Size	19MM	21MM	25MM
#DX	561-100		
#D1		561-101	561-201
#D2		561-102	561-202
#D3		561-103	561-203
#D4		561-104	561-204
#D5		561-105	561-205
#Asst D1/D4		561-191	561-291

(Pkg. of 4)



FILE HAND GRIP

- ITEM #702-101
 - Designed to use Dia-PT™ File and Dia-X File for the Hand Use.
 - Autoclavable
 - Packed 4pcs



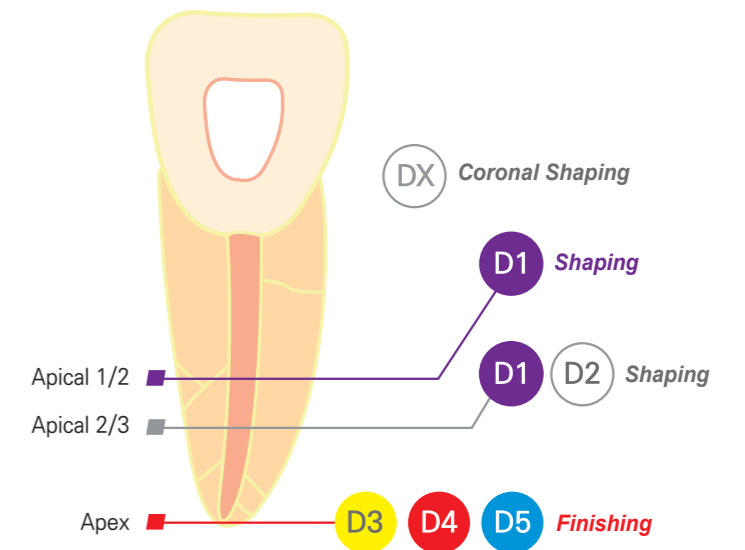
DIA-PT™ FILE & DIA-X FILE NICKEL TITANIUM ROTARY FILES

INSTRUCTION

- DX**
 - Check the working length with X-ray.
 - Prepare the straight-line access to canal orifice.
- D1**
 - The D1 expands the glide path and enlarges to widen the coronal portion of canal. Always irrigate the canal with NaOCl before engaging the file. Gently work D1 until a smooth glide path is confirmed.
 - The D1 into the canal and follow the glide path and laterally brush before light resistance is appeared. And cut dentin on the outstroke to improve straight-line access and apical progression.
 - Continue shaping and brushing with the D1 until the depth of the #15 hand file is reached.
 - Check the working length with the #15 hand file and Apex locator.
- D1 D2**
 - The D2 enlarges to the apical 2/3.
 - Use D1 or D2 until working length is reached with a brushing action.
 - Confirm working length frequently as shaping the severely curved canals.
- D3 D4 D5**
 - Use D3 as an In-and-out Pecking Motion until the depth of the #20 hand file is reached.
 - If the #20 hand file is loose at length, proceed to the D4 with corresponding the #25 hand file.
 - If the #25 hand file is loose at length, proceed to the D5 with corresponding the #30 hand file.

Dia-PT™ File & DIA-X File

- RECOMMENDED SPEED : 250~350RPM
- RECOMMENDED TORQUE : 2~3 NCM



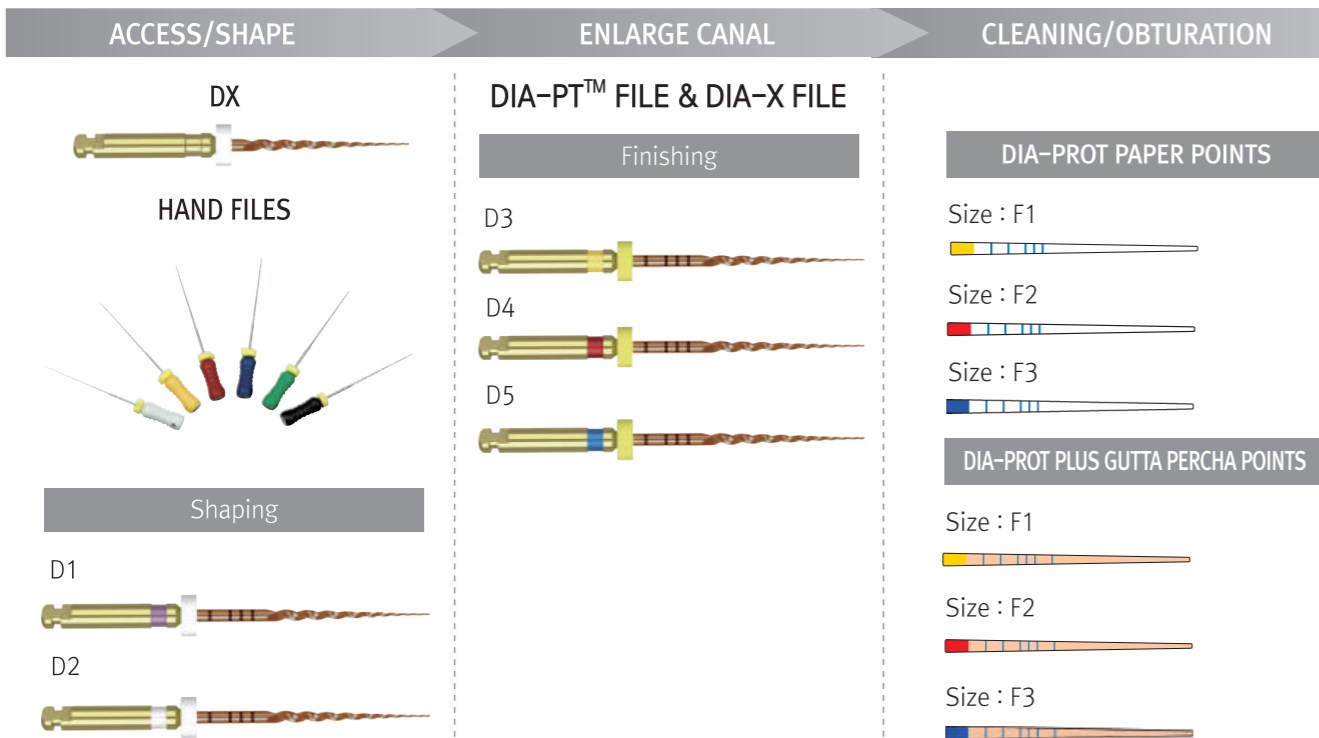
TIP

- Inspect files for distortion or wear, such as uneven flutes, dull spots or bending.
- Lubricate files generously with DIAPREP™ PRO.
- Remove the debris from its flutes before continuing.
- Irrigate and re-irrigate after using each rotary file.
- Dia-PT™ file & Dia-X File should be used at a constant rotation and stable speed of 300 rpm to avoid the file fracture.
- Use very light pressure. Never force instruments to working length.
- Use the files for no more than one or two seconds in the canal.
- Autoclave files always after use.

DIA-PT™ FILE & DIA-X FILE

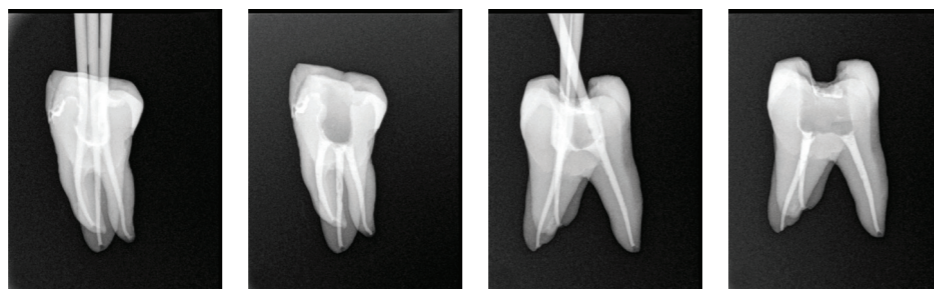
NICKEL TITANIUM ROTARY FILES

CLINICAL PROCESS

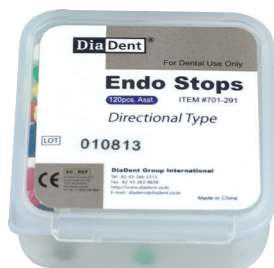


Radiographs

Precisely shaped and sealed root canals after the treatment with Dia-PT™ File & DIA-X File.



ENDO STOPS



- ITEM #701-291
 - Directional type
 - 120 Stops and Assorted colors packed in a plastic box
 - These endo stops can not be used with ENDO STOP DISPENSER



DIAPREP™ PRO

EDTA ROOT CANAL PREPARATION CREAM

EDTA Cream with Urea Peroxide, used as an irrigation agent for chemo-mechanical preparation of the root canal.



Characteristics

- Debridement in the root canal
- Dissolution of pulp remnants
- Removal of smear layer
- Facile movements of canal instruments
- Microbicidal treatment within the canal
- Clearance of dentin tubules and apical area

Benefits

- EDTA removes smear layer, softens dentin, and facilitates the removal of calcific obstruction.
- Urea Peroxide reacts with Sodium Hypochlorite to produce oxygen bubbles that flush out debris within the canal.
- The lubricant medium facilitates instrument movement within the canal to eliminate instrument binding or breakage.
- Unclogged dentin tubules and apical area permit better penetration of root canal medicaments and fillings.
- Provides rapid cleansing and enlarging of canals due to EDTA, which softens walls and smooth calcium deposits.
- Easier placement into canals than liquids.

Packages

- ITEM #2002-4100
 - 2 syringes of 6g and 10 disposable tips with 1 protective cap
- ITEM #2001-6119
 - 10 disposable tips

ENDO-CLEAR™

EDTA ROOT CANAL CLEANSER(EDTA 17%)

Endo-Clear™ is the EDTA root canal cleanser, colorless and clear without foreign matters and effectively cleans the canal and removes smear layer. Chelating effect of Endo-Clear™ softens root canal wall, dissolves calcium and removes it.

Benefits

- Easy to enlarge the canal and clean it and eliminate remnants from the root canal
- Superior microbicidal treatment within the canal and dissolution effect of pulp remnants
- Great removal effect of the smear layer being based on water
- Get to apical area easily where hard for gel type to reach
- Effectively remove smear layer around apical area better than cream type

Packages

- ITEM #2002-5002 100ml Endo Clear Solution



DIA-GEAR

ENDODONTIC MICRO-MOTOR

- Cordless and simple interface design
- Ergonomic and compact body
- Push button type head for easy exchange files
- Program setting memorized for easy operation

Features

- **Endodontic micro-motor, specifically designed to drive Nickel Titanium Rotary Files**
 - RPM: 100-600RPM
 - Torque: 1-4N.cm
 - Gear ratio: 20:1
 - Rotation mode: 1, 2
- **Program function:**
 - 5 memory programs of (Gear ratio, Torque, RPM, Direction mode) are available to set
- **Setting torque limit function**
 - Once actual load on the files is higher than preset torque, it stops working automatically
- **Rotation mode**

Users can choose auto-rotation mode according to operation condition

 - Mode 1: Once actual torque is over the preset torque, the file moves in reverse rotation After removing the load, it stops
 - Mode 2: Once actual torque is over the preset torque, the file runs in reverse automatically and it turns forward rotation again once load released
- **Auto-off function**
 - Power is off with beep sound after 4 minutes without operation



Package

- ITEM #4006-1001 Regular Kit

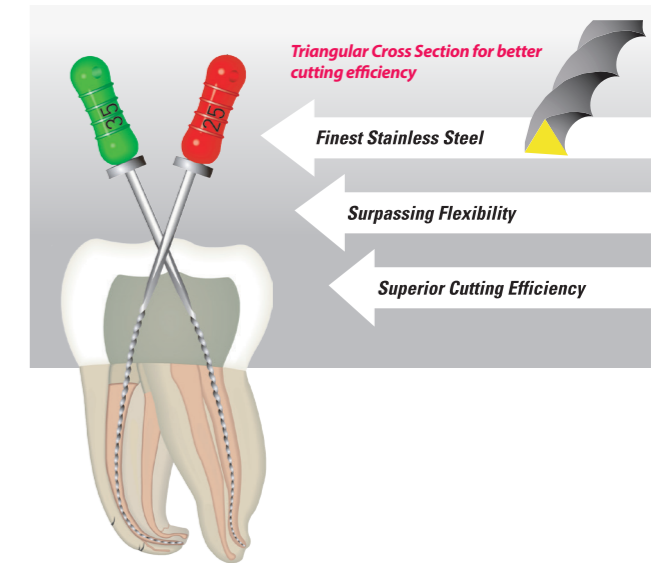
Accessories

- ITEM #4006-1101 Handpiece
- ITEM #4006-1201 Charger
- ITEM #4006-1301 Angle



DIA-FLEX FILE

FLEXIBLE K-FILE



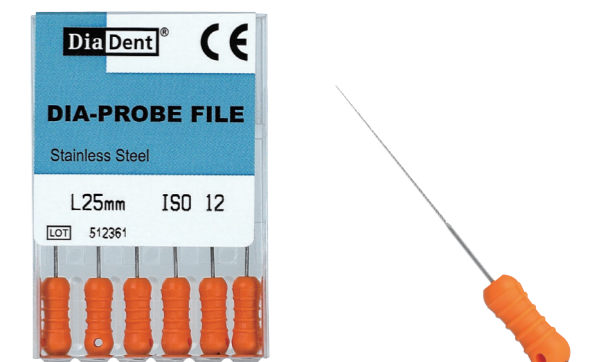
- Made of high-quality Stainless Steel for creating a more fracture-resistant shape and edge
- Enables a complete preparation of even severely curved and narrow canals
- Offers better Cutting Power and Flexibility to shape any root canals easily, safely and very fast
- Available in Sizes 15 through 40 and 21mm, 25mm and 31mm lengths

Size	21MM	25MM	31MM
#15	505-103	505-203	505-303
#20	505-104	505-204	505-304
#25	505-105	505-205	505-305
#30	505-106	505-206	505-306
#35	505-107	505-207	505-307
#40	505-108	505-208	505-308
#15/40	505-191	505-291	505-391

(Pkg. of 6)

DIA-SPIRAL FILLER

DIA-PROBE FILE



- Lentulo Paste filler used to evenly distribute root canal sealer and cement in the root canal system
- Conical shape made from grinded wire and made of high grade stainless steel with gradual spirals
- Rather stiff without the safety spiral
- Available in Sizes 25 to 40 and 21mm, 25mm lengths

- Canal Probe
- The minimal taper helps to perform intermediate steps in the calcified or curved canals
- Available in Size #12 and 21mm, 25mm lengths

Size	21MM	25MM
#25	507-105	507-205
#30	507-106	507-206
#35	507-107	507-207
#40	507-108	507-208
#25/40	507-191	507-291

Size	21MM	25MM
#12	506-101	506-201

(Pkg. of 6)

(Pkg. of 4)

GATE DRILLS

- Used for time-saving preparation of the upper and middle part of non-curved canal or the straight part of curved canal effectively and creating the excellent access for Reamers and Files.
- Enlarge the straight coronal portion of the canal with Gate Drills and then step down with Endodontic Files using the biggest size firstly as the Crown Down Technique.
- Superior Stainless Steel with the improved cutting capacity.
- Circle ring is coded on the shank.
- Recommended Speed: 800~1200r/min

Size	28mm	32mm
#1	531-101	531-201
#2	531-102	531-202
#3	531-103	531-203
#4	531-104	531-204
#5	531-105	531-205
#6	531-106	531-206
#Asst1/6	531-191	531-291

(Pkg. of 6)



PEESO REAMERS

- Used for the preparation of coronal third and picking up the fillings inside the root canal.
- Often used for the post path.
- Excellent stainless steel with a sharper blade to provide the rapid enlargement.
- Circle ring is coded on the shank.
- Recommended speed: 800~1200r/min

Size	28mm	32mm
#1	541-101	541-201
#2	541-102	541-202
#3	541-103	541-203
#4	541-104	541-204
#5	541-105	541-205
#6	541-106	541-206
#Asst1/6	541-191	541-291

(Pkg. of 6)



ENDODONTIC NICKEL TITANIUM HAND FILES/PLASTIC PACKAGE

Increased Flexibility

: NiTi Shaft is made of premium Nickel-Titanium with 5 times the flexibility compared to Stainless Steel Files.

Strength

: NiTi has 10 times the stress resistance compared to Stainless Steel Files.

Convenience

: Produces smooth and progressive enlargement of root canal.
NiTi follow existing canal path and has memory so there is no need to Pre-Bend the files.

Efficiency

: Color Coded handles and pre-inserted silicone stops.

Safety

: NiTi resists spontaneous breakage.
Increased angular rotation reduces fracture.
NiTi decreases zipping and stripping.



NITI REAMERS

NICKEL-TITANIUM REAMERS(.02 TAPER)

size	21MM	25MM
#8	NT501-101	NT501-201
#10	NT501-102	NT501-202
#15	NT501-103	NT501-203
#20	NT501-104	NT501-204
#25	NT501-105	NT501-205
#30	NT501-106	NT501-206
#35	NT501-107	NT501-207
#40	NT501-108	NT501-208
#45	NT501-109	NT501-209
#50	NT501-110	NT501-210
#55	NT501-111	NT501-211
#60	NT501-112	NT501-212
#70	NT501-113	NT501-213
#80	NT501-114	NT501-214
#15/40	NT501-191	NT501-291
#45/80	NT501-192	NT501-292

(Pkg. of 6)



NITI K-FILES

NICKEL-TITANIUM K-FILES(.02 TAPER)

size	21MM	25MM
#8	NT502-101	NT502-201
#10	NT502-102	NT502-202
#15	NT502-103	NT502-203
#20	NT502-104	NT502-204
#25	NT502-105	NT502-205
#30	NT502-106	NT502-206
#35	NT502-107	NT502-207
#40	NT502-108	NT502-208
#45	NT502-109	NT502-209
#50	NT502-110	NT502-210
#55	NT502-111	NT502-211
#60	NT502-112	NT502-212
#70	NT502-113	NT502-213
#80	NT502-114	NT502-214
#15/40	NT502-191	NT502-291
#45/80	NT502-192	NT502-292

(Pkg. of 6)



NITI H-FILES

NICKEL-TITANIUM H-FILES(.02 TAPER)

size	21MM	25MM
#8	NT503-101	NT503-201
#10	NT503-102	NT503-202
#15	NT503-103	NT503-203
#20	NT503-104	NT503-204
#25	NT503-105	NT503-205
#30	NT503-106	NT503-206
#35	NT503-107	NT503-207
#40	NT503-108	NT503-208
#45	NT503-109	NT503-209
#50	NT503-110	NT503-210
#55	NT503-111	NT503-211
#60	NT503-112	NT503-212
#70	NT503-113	NT503-213
#80	NT503-114	NT503-214
#15/40	NT503-191	NT503-291
#45/80	NT503-192	NT503-292

(Pkg. of 6)

ENDODONTIC STAINLESS STEEL HAND FILES

- Root canal cleaning and shaping instruments
- Offers superior cutting efficiency on insertion and withdrawal and procession handling
- Ergonomic color coded handle provides comfort and excellent tactile feedback
- Available in sizes 8 through 80 and 21mm, 25mm & 31mm lengths



REAMERS



- Made from Stainless Steel wire that is ground to triangular shape and twisted

size	21MM	25MM	31MM
# 8	SS501-101	SS501-201	SS501-301
# 10	SS501-102	SS501-202	SS501-302
# 15	SS501-103	SS501-203	SS501-303
# 20	SS501-104	SS501-204	SS501-304
# 25	SS501-105	SS501-205	SS501-305
# 30	SS501-106	SS501-206	SS501-306
# 35	SS501-107	SS501-207	SS501-307
# 40	SS501-108	SS501-208	SS501-308
# 45	SS501-109	SS501-209	SS501-309
# 50	SS501-110	SS501-210	SS501-310
# 55	SS501-111	SS501-211	SS501-311
# 60	SS501-112	SS501-212	SS501-312
# 70	SS501-113	SS501-213	SS501-313
# 80	SS501-114	SS501-214	SS501-314
# 15/40	SS501-191	SS501-291	SS501-391
# 45/80	SS501-192	SS501-292	SS501-392

(Pkg. of 6)

K-FILES



- Designed to clean and shape root canals
- Produced to give operators a smooth tactile sense inside the canal during instrument

size	21MM	25MM	31MM
# 8	SS502-101	SS502-201	SS502-301
# 10	SS502-102	SS502-202	SS502-302
# 15	SS502-103	SS502-203	SS502-303
# 20	SS502-104	SS502-204	SS502-304
# 25	SS502-105	SS502-205	SS502-305
# 30	SS502-106	SS502-206	SS502-306
# 35	SS502-107	SS502-207	SS502-307
# 40	SS502-108	SS502-208	SS502-308
# 45	SS502-109	SS502-209	SS502-309
# 50	SS502-110	SS502-210	SS502-310
# 55	SS502-111	SS502-211	SS502-311
# 60	SS502-112	SS502-212	SS502-312
# 70	SS502-113	SS502-213	SS502-313
# 80	SS502-114	SS502-214	SS502-314
# 15/40	SS502-191	SS502-291	SS502-391
# 45/80	SS502-192	SS502-292	SS502-392

(Pkg. of 6)

H-FILES



- Ground from Stainless Steel wire
- The flute depth increases with the taper, creating a shaper, more flexible instrument

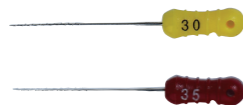
size	21MM	25MM	31MM
# 8	SS503-101	SS503-201	SS503-301
# 10	SS503-102	SS503-202	SS503-302
# 15	SS503-103	SS503-203	SS503-303
# 20	SS503-104	SS503-204	SS503-304
# 25	SS503-105	SS503-205	SS503-305
# 30	SS503-106	SS503-206	SS503-306
# 35	SS503-107	SS503-207	SS503-307
# 40	SS503-108	SS503-208	SS503-308
# 45	SS503-109	SS503-209	SS503-309
# 50	SS503-110	SS503-210	SS503-310
# 55	SS503-111	SS503-211	SS503-311
# 60	SS503-112	SS503-212	SS503-312
# 70	SS503-113	SS503-213	SS503-313
# 80	SS503-114	SS503-214	SS503-314
# 15/40	SS503-191	SS503-291	SS503-391
# 45/80	SS503-192	SS503-292	SS503-392

(Pkg. of 6)

BARBED BROACHES



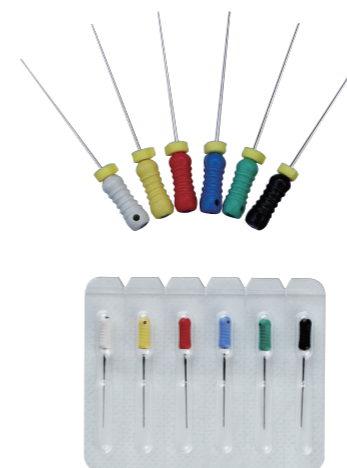
- Designed to remove pulp tissue
- Put it straight into the root canal, rotation at 180° and pull out



size	21MM	25MM
#20(XXXXF)	504-001	504-201
#25(XXXF)	504-002	504-202
#30(XXF)	504-003	504-203
#35(XF)	504-004	504-204
#40(F)	504-005	504-205
#25/40(XXX/F)	504-092	504-292

(Pkg. of 6)

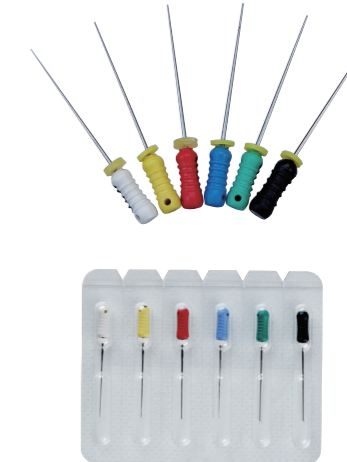
SPREADER



- Used for the lateral condensation of root canal fillings.
- Made of Stainless Steel.
- High Resistance to wear and Excellent Condensation Efficiency.
- 6pcs in a blister package

size	21MM	25MM
#15	520-103	520-203
#20	520-104	520-204
#25	520-105	520-205
#30	520-106	520-206
#35	520-107	520-207
#40	520-108	520-208
#15/40	520-191	520-291

PLUGGER



- Used for the vertical condensation of root canal fillings.
- Made of Stainless Steel.
- High Resistance to wear and Excellent Condensation Efficiency.
- 6pcs in a blister package

size	21MM	25MM
#15	521-103	521-203
#20	521-104	521-204
#25	521-105	521-205
#30	521-106	521-206
#35	521-107	521-207
#40	521-108	521-208
#15/40	521-191	521-291

DIA-KONDENSOR



Nickel titanium

Stainless steel

- Having both a nickel-titanium end and a stainless steel end, it can be used in any common endodontic obturation technique including warm and cold condensation.
- Excellent durability.
- Can be supplied 1 piece or a set included each 4 sizes.
- Convenient use with color-coding on the condensers.
- Lightweight and comfort design

size	ITEM No.
#35/70(Green)	551-101
#40/80(Black)	551-102
#50/100(Yellow)	551-103
#60/120(Blue)	551-104
Set (4pcs)	551-191

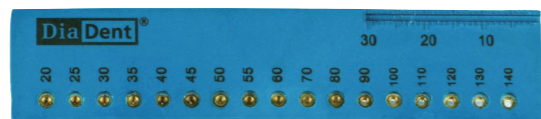
DIA-ENDORING

- ITEM #850-001
- A convenient ring for Hand & Rotary Files.
- Gauges from 1 to 30mm.
- A simple & practical design for measuring files.
- Gold plated ring prevents color change.
- Dimension: 45×25×15m/m (W×H×D)



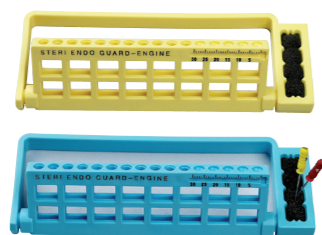
DIA-GP GAUGE

- ITEM #781-001
- Designed to size a perfect master cone from any Gutta Percha Points.
- Drop it into the apical size and cut off with a blade.
- Autoclavable
- Dimensions: 92×3×20m/m(W×H×D)



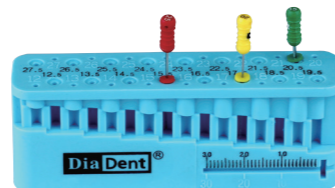
STERI ENDO GUARD W/RULER(ENGINE FILE)

- ITEM #716-203 Yellow
- ITEM #716-206 Blue
- Holds 16 NiTi Rotary Files.
- Right or left hand use.
- Available to insert sponge to clean or hold files.
- Diameter: 75m/m, Height: 35m/m



FILE MEASURE SET(PLASTIC)

- ITEM #780-001
- Holds 32 Measuring Grades.
- Gauge from 12 to 27.5m/m, Including half measurements.
- Dimensions: 87×31×20m/m (W×H×D)



DIAFLEX™ IRRIGATION SYRINGE FOR ROOT CANAL

- Flexible soft polypropylene tip syringe for root canal irrigation.
- Autoclavable and chemiclavable for multiple use up to 50 times.
- 1.3ml volume imprinted at intervals of 1mm.
- Provides maximum clinical effect in a minimum of time.
- DiaFlex is compatible with Luer Lock Syringes

DiaFlex - III

- ITEM #1003-301
- Package of 3 color coded syringes, 20 changeable tips and silicone oil

DiaFlex - V

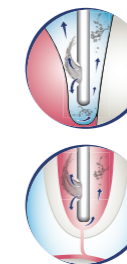
- ITEM #1003-501
- Package of 5 color coded syringes, 20 changeable tips and silicone oil

- ITEM #1001-320
- Clear Disposable Tips(Curved)
- 20 disposable tips

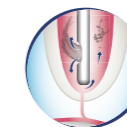


STERI. IRRIGATION TIPS-SIDE OPEN TYPE

- Disposable Endodontic & Periodontal Irrigation Tips with Safety.
- Unique design with a side-port for superior effectiveness and patient comfort in irrigating root canals and periodontal pockets.
- Pre-sterilized by E.O Gas.
- Use with Luer Lock Syringes.
- Side-Port and Closed-end Irrigation tips.



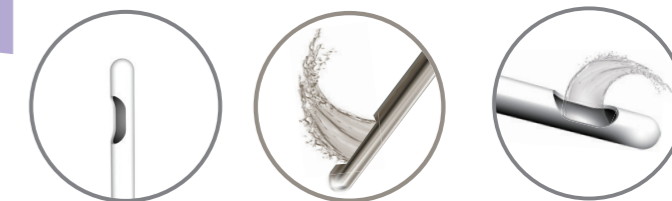
PERIODONTAL POCKETS
– Side-port design make an effective irrigate pockets and closed, rounded tip can reduce the risk of tissue damage.



ROOT CANALS
– Side-port dispersal can create an upward flushing motion for the complete root canal preparations and cleanse the gingival sulci fully without damaging tissue.

size	Color	ITEM No.
31G (0.25 x 25mm)	Clear White	951-101A
30G (0.30 x 25mm)	Yellow	951-102A
28G (0.36 x 25mm)	Blue Green	951-103A

(Pkg. of 50)



IRRIGATION TIPS-END OPEN TYPE

- Disposable Endodontic & Periodontal Irrigation tips
- Use with Luer Lock Syringes.
- Thoroughly irrigate root canal preparations.
- Round end tip can prevent the secondary injury during the use.
- Widest selection of tips: 6 sizes from 18G to 27G.



size	Color	ITEM No.
18G (1.2 x 25mm)	Pink	951-201A
19G (1.1 x 25mm)	Cream	951-202A
20G (0.9 x 25mm)	Yellow	951-203A
22G (0.7 x 25mm)	Black	951-204A
25G (0.5 x 25mm)	Orange	951-205A
27G (0.4 x 25mm)	Medium Grey	951-206A

(Pkg. of 100)



SMALL ROUND TYPE B

- ITEM # 802-003 Red
- ITEM # 802-004 Blue



- Ideal for Organizing Hand Files.
- Holds 20 instruments.
- Removable Insert for Cleaning.
- Diameter: 40m/m, Height: 60m/m



MEDIUM SQUARE

- ITEM #804-003 Red
- ITEM #804-004 Blue



- A Versatile & Practical Organizer with a Clean Grip for Hand & Rotary File as well as Cups for Gutta Percha & Paper Points.
- Features a Endo Meter for measuring Files & Points.
- Holds 5 Burs, 30 Instruments, 6 Silicone Cups, 1 Clean Grip, Endo Meter and 1 location for small instruments.
- Removable Insert for Cleaning.
- Dimensions: 120x50x80m/m (WxHxD)



ENDO GRIP(MINI)

- ITEM #833-001



- Commonly Used for Cleaning Files.
- Holds sponge or gauze.
- Available in Blue.
- Diameter: 40m/m, Height: 35m/m



PROPHY BRUSH

- ITEM #950-101 : Latch Type
- ITEM #950-102 : Screw Type
- Packed 144 brushes

- Diameter
- Latch Type : 4.48mm
- Screw Type : 4.48mm



Latch Type (PB - 001)



Screw Type (PB - 002)

PROPHY BRUSH LARGE HEAD LATCH TYPE

- ITEM #950-121
- Packed 144 brushes
- Diameter : 5.98mm



(PB - 005)

PROPHY RUBBER CUP RIBBED & WEBBED

- ITEM #950-201 : Latch Type
- ITEM #950-202 : Screw Type
- Packed 144 cups



Latch Type (RC - 001)



Screw Type (RC - 002)

PROPHY RUBBER CUP WEBBED

- ITEM #950-211 : Latch Type
- ITEM #950-212 : Screw Type
- Packed 144 cups



Latch Type (RC - 003)



Screw Type (RC - 004)

PROPHY RUBBER CUP WEBBED WITH WASHER LATCH TYPE

- ITEM #950-241
- Packed 144 cups



(RC - 009)

PROPHY RUBBER CUP SNAP-ON RIBBED & WEBBED

- ITEM #950-253
- Packed 144 cups



(RC - 012)

ENDO SHAPING BLOCK

- ITEM #943-101
- Clear acrylic blocks
- Ideal for training bloc for shaping root canals with rotary files.
- Pkg of 10

